



NOVA PORTAFOLIO

POSSIBILITIES ARE ENDLESS AS WE BUILT TO LAST



WHAT WE DO?

ROOFING AND WATERPROOFING SYSTEMS

Roof Replacement
Roof Recovery
Slate Roof Replacement
Balcony and terrace waterproofing
Façade walls waterproofing

FAÇADE RESTORATION

Masonry Restoration
Local law 11 Repairs
Metal panel Systems
Stucco Installation
Façade and Stone Cleaning

ARCHITECTURAL METALS

Cast Iron Repair and Replacement
Cornice Restoration and Replacement
Canopy, Entrance and Gate Restoration
Dormer Restoration
Copper Roof Replacement
Skylight Replacement
Fire escape restoration
Steel Restoration and Replacement
Window Restoration
Railing Replacement
Structural Shoring

ARCHITECTURAL STONE

Landmark Preservation
Terra Cotta Repair and Replacement
Limestone, Brownstone and Granite
Repair and Replacement

ACCESS

Sidewalk shed
Pipe Scaffolding
Suspended Scaffolding
Material Hoist

CONCRETE & COATING

Sidewalk Replacement
Cast Stone Installation
GFRC/GFRP Cornice restoration
Coating Repair and Installation
Vault Repairs and Replacement
Concrete Eyebrow and Structural repairs

CONSULTING

Emergency Repairs
Aerial Lift Inspections
Suspended Scaffolding Inspection
Mortar and Stone Analysis
Test Cleaning and Sampling
Roofing Analysis
Leak Investigation
Color Matching



TABLE OF CONTENTS

118-21 Queens Blvd
131 Duane Street
141 East 88th Street
150 Central Park South
150 Central Park South
20 West 44 Street Balustrade
Restoration
20 West 44th Street
2211 Broadway- Sidewalk Vault
Rehabilitation
378 West End Avenue - Masonry
Restoration
410 Riverside Drive
505 LaGuardia Pl
"564 Park Avenue
(Phase A + Phase B)"
66 Morton Street
940 Park Avenue, NY
451 Broome Street
2211 Broadway
108 Leonard Street
660 Park Ave.
924 West End Avenue
35 Crosby Street
Saint Mark's Church in the
Bowery / 131 East 10th Street
830 Park Avenue
840 Park Avenue
205 West 89th Street
2 East 70th Street
The Players Club - The Lucy G.
Moses Preservation Awards -
2014 - 16 Gramercy Park Suth
440 Riverside Drive
15 West 67th Street
129 West 22nd Street
1035 Park Avenue
Pratt Family Mausoleum Locust
Valley
Box Hill
34 Gramercy Park East
59 Bleecker Street
65 Bleecker Street
St. Paul's Chapel
11-13 East 67th Street
16 West 16th Street
700 Park Ave





PICKMAN BUILDING

1181-21 QUEENS BLVD
2019- 2022

Exterior repairs. Parapet reconstruction. Asbestos abatement coping, base flashing, roofing strip. Brick masonry replacement. Roof Drain Replacement. Roof Drain Replacement. Chimney repairs. Cutting & pointing.

SERVICE

Façade Restoration
Masonry Restoration
Local law 11 Repairs
Metal panel Systems

Access
Sidewalk shed
Pipe Scaffolding
Suspended Scaffolding
Material Hoist

Architectural Metals
Window Restoration



MVN Architect LLC
Architect/Engineer





HOPE BUILDING

131 Duane Street
2020- 2022



Marble Facade Restoration: units replacements, paint striping of marble surfaces, crack repairs, brackets replacement. Dutchman repairs. Mortar restoration. Brick restoration: masonry replacement, cracks fill. Sheet Metal cornice replacement.



SERVICE

Façade Restoration

Masonry Restoration
Façade and Stone Cleaning

Architectural Metals

Cornice Restoration and Replacement
Fire escape restoration

Architectural Stone

Landmark Preservation
Limestone, Brownstone and Granite Repair and Replacement



Sciame Construction LLC

Architect/Engineer





PHILIPS HOUSE

141 East 88th Street

2020- Ongoing

Local Law 11 inspections. Terra Cotta Repair and Replacement. Parapet wall replacement. Roof replacement. Leak Investigation. Metal Panels System. Window replacement. GFRP cornice fabrication and installation

SERVICE

Roofing and Waterproofing Systems

Roof Replacement
Balcony and terrace waterproofing

Façade Restoration

Masonry Restoration
Local law 11 Repairs
Metal panel Systems

Architectural Metals

Steel Restoration and Replacement
Window Restoration

Architectural Stones

Terra Cotta Repair and Replacement

Access

Sidewalk shed
Pipe Scaffolding
Suspended Scaffolding
Material Hoist

Concrete & Coating

GFRP/GFRP Cornice restoration



**Lawless & Mangione,
Architects &
Engineers, LLP**

Architect/Engineer





HEMPSHIRE HOUSE

150 Central Park South
2018 - 2019

Rebuild existing window openings. Replacement all existing shel angle, new waterproofing system installation.

SERVICE

Facade Restoration

Masonry Restoration
Local law 11 Repairs

Access

Sidewalk shed
Pipe Scaffolding
Suspended Scaffolding
Material Hoist

Architectural Metals

Steel Restoration and Replacement

Concrete & Coating

GFRC/GFRP Cornice restoration



Sciame Construction LLC

Architect/Engineer





HEMPSHIRE HOUSE

150 Central Park South

2020 - Ongoing

Removal of existing sidewalk shed and installation of heavy duty sidewalk shed. Pipe Scaffold Installation. Brick removal and installation of new. Brick corner removal. Waterproofing. Door Lintel Replacement. Window rebricking. Parapet Wall Demolition.

SERVICE

Façade Restoration

Masonry Restoration
Local law 11 Repairs

Access

Sidewalk shed
Pipe Scaffolding
Suspended Scaffolding
Material Hoist

Architectural Metals

Steel Restoration and Replacement

Concrete & Coating

GFRC/GFRP Cornice restoration



Bertolini
Architectural Work, D.P.C.
Architect/Engineer





THE GENERAL SOCIETY OF MECHANICS & TRADESMEN GSMT

20 West 44 Street
Balustrade Restoration

2019 - 2021

Masonry Repointing & Caulking. Ornamental
Metals. Sheet Metal Flashing and Trim. Fire
Escpae Restoration

SERVICE

Façade Restoration

Masonry Restoration
Local law 11 Repairs
Façade and Stone Cleaning

Architectural Metals

Cornice Restoration and Replacement
Fire escape restoration

Architectural Stone

Landmark Preservation
Terra Cotta Repair and Replacement

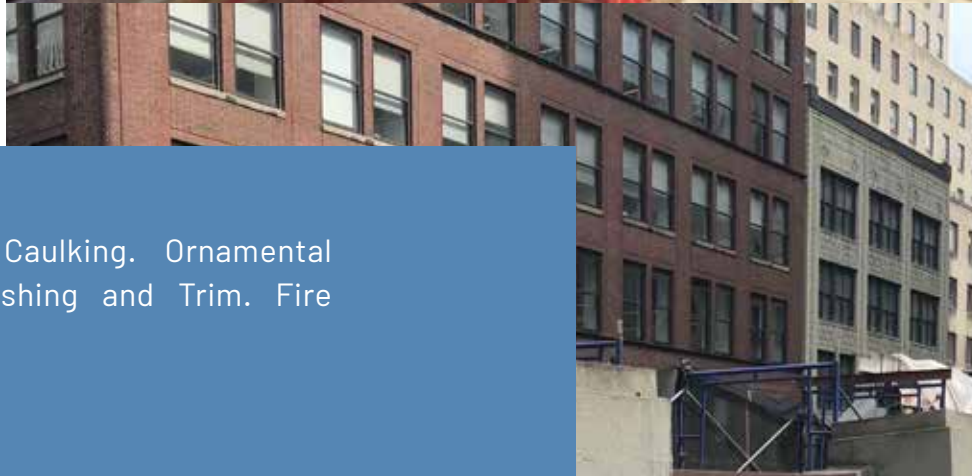
Access

Sidewalk shed
Pipe Scaffolding



Easton Architects, LLP

Architect/Engineer





THE GENERAL SOCIETY OF MECHANICS & TRADESMEN GSMT

20 West 44th Street

2021 - Ongoing

Clean and coat fire escapes. Ornamental bracket repair and replacement. Terra-Cotta units replacement. Terra-Cotta crack repair and patching. Brick masonry re-pointing and cleaning. Brick masonry replacement. Copper cleaning.

SERVICE

Façade Restoration

Masonry Restoration
Local law 11 Repairs
Façade and Stone Cleaning

Architectural Metals

Cornice Restoration and Replacement
Fire escape restoration

Architectural Stone

Landmark Preservation
Terra Cotta Repair and Replacement

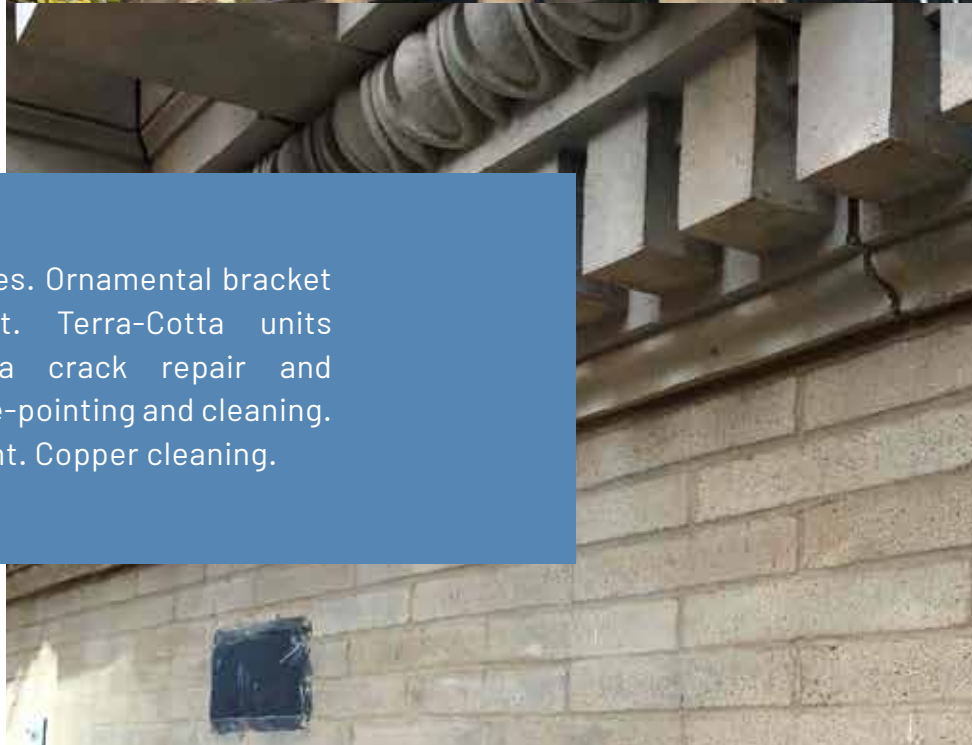
Access

Sidewalk shed
Pipe Scaffolding



**Howard L.
Zimmerman
Architects. P.C.**

Architect/Engineer





THE APTHORP

2211 Broadway- Sidewalk
Vault Rehabilitation

2019 - Ongoing

Sidewalk concrete pavement removal and installation. Granite Slabs removal and reinstallation. Metal Gate removal and reinstallation. Stone Railing removal and reinstallation. Roof Drains, Trench Drains, New Steel Framing Dutchman repairs, brick replacement. Brick Repointing.

SERVICE

Architectural Metals

Canopy, Entrance and
Gate Restoration

Architectural Stone

Landmark Preservation

Concrete & Coating

Sidewalk shed
Vault Repairs and Replacement



Vidaris, Inc.

Architect/Engineer





378 West End Avenue - Masonry Restoration 2020 - 2022



Brick Masonry Replacement and re-pointing. Limestone and Dutchman repairs. Structural steel repair, waterproofing. Repoint of limestone ornamentation. Terra-Cotta Replacement: furnish and install new units. Terra-Cotta steel lintel replacement at Window Heads, removal of cracked terra-cotta stones to reveal steel lintels. Scrape, prime and painting of exposed window lintels and 3rd Floor Balcony Guards. Sealant replacement. Furnish New GFRC banister with bracket (with weeps at the sealant joint) and balustrade. Furnish and install Hanover pavers. Install new aluminium railing. Reconstruction historic cresting on West and North facade. Remove and discard window at light wells on the West and North facade. Facade Brick Cleaning - West and North Facade. Facade Limestone Cleaning Base.



SERVICE

Facade Restoration

Masonry Restoration
Local law 11 Repairs
Facade and Stone Cleaning

Architectural Stone

Landmark Preservation
Terra Cotta Repair and Replacement
Limestone, Brownstone and
Granite Repair and Replacement

Concrete & Coating

Cast Stone Installation
GFRC/GFRP Cornice restoration

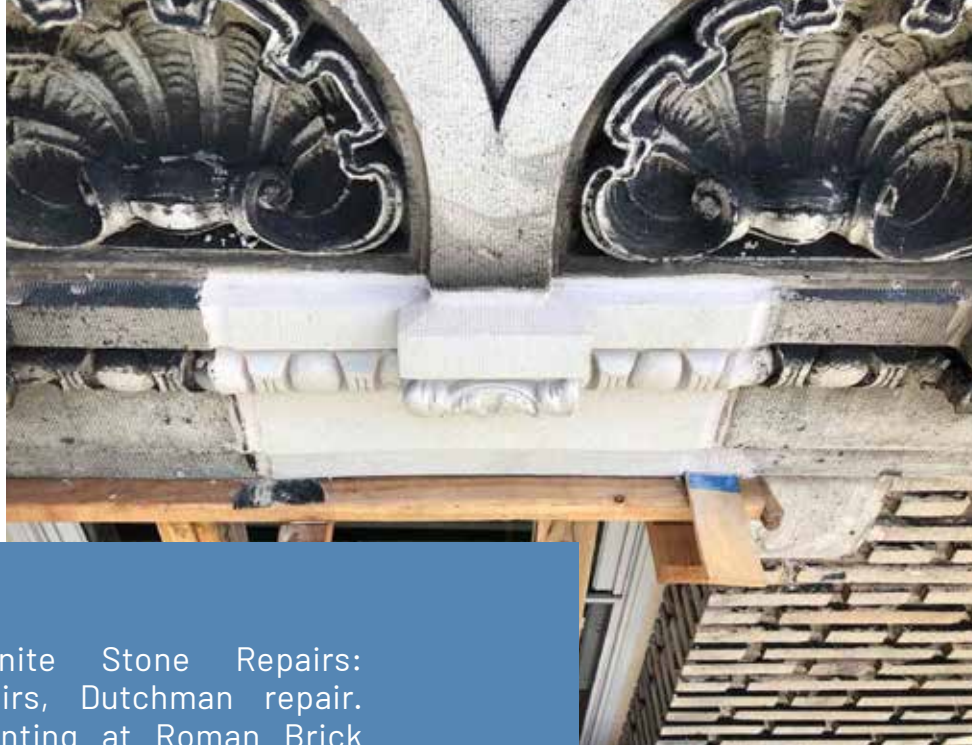


Leeding Builders Group LLC
Architect/Engineer



410 Riverside Drive

2019 - 2022



Facade Repairs. Granite Stone Repairs: repointing, patch repairs, Dutchman repair. Masonry Repairs: repointing at Roman Brick Masonry, Roman brick replacement, Limestone Repointing and Staple Adhesive, Pin Adhesive repair. Terra-Cotta Repairs: patching, glaze coating application, staple repair, crack repairs, architectural terra-cotta block replacement, corner quoin replacement. Corner Stabilization. Window Sealant Replacement. Miscellaneous Facade Repairs.

SERVICE

Façade Restoration

Masonry Restoration
Local law 11 Repairs

Architectural Metals

Fire escape restoration

Architectural Stone

Landmark Preservation
Terra Cotta Repair and Replacement
Limestone, Brownstone and
Granite Repair and Replacement

Access

Sidewalk shed
Pipe Scaffolding
Suspended Scaffolding
Material Hoist



**CANY Architecture
& Engineering D.P.C**

Architect/Engineer





505 LaGuardia Pl

2019 - 2022

Sidewalk Shed Installation and Removal.
Scaffolding. Asbestos Removal. Sounding of
Concrete. Concrete Repairs. Sealant
Replacement. Concrete Repairs. Replacement
and Repairs of Reinforcing Bars.

SERVICE

Façade Restoration
Local law 11 Repairs

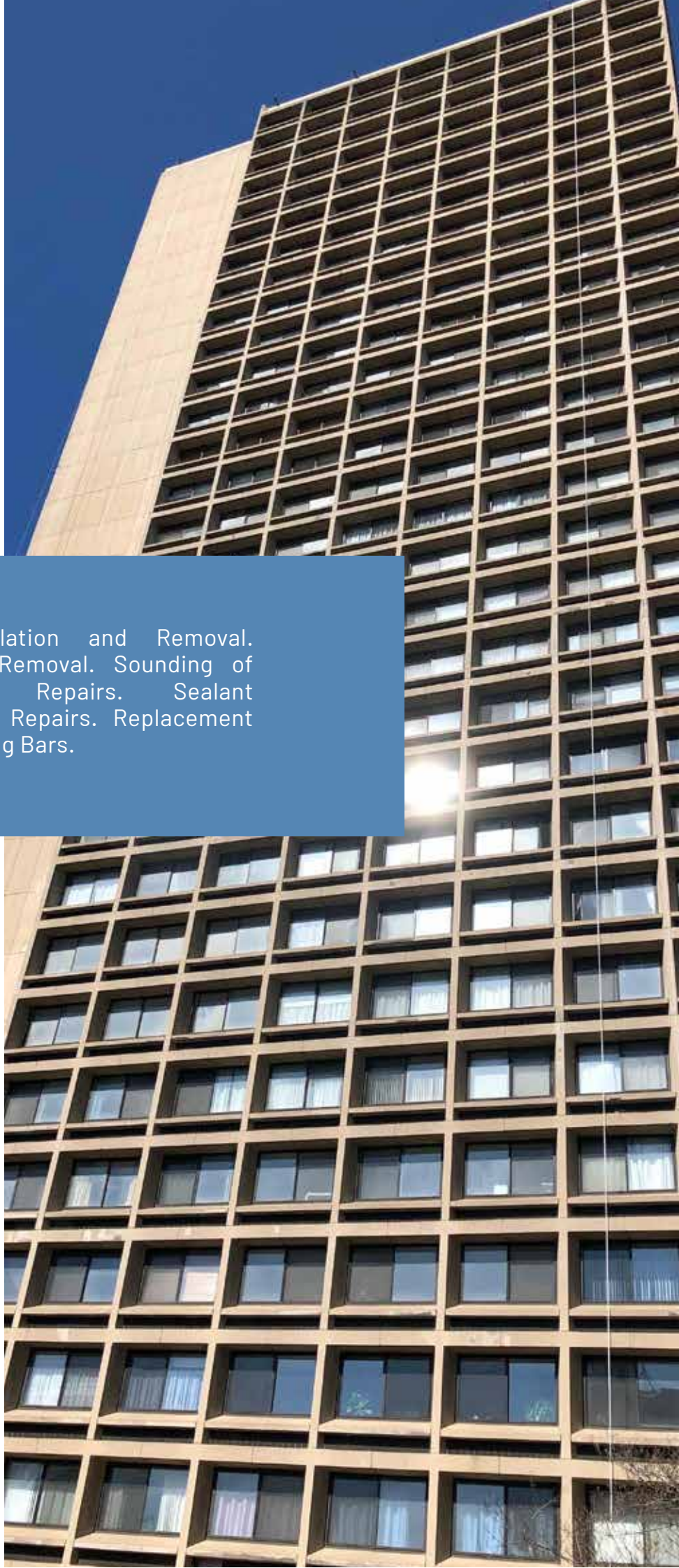
Architectural Stone
Landmark Preservation

Concrete & Coating
Concrete Eyebrow and
Structural repairs



**Accardo Engineering,
PLLC**

Architect/Engineer





COLONY CLUB

564 Park Avenue

2019 - 2021

Remove and replace all white glazed brick on facades, including bulkhead at the main roof. Remove and replace masonry to facilitate steel repairs and replacement face brick. Remove and replace existing marble coping stones. Remove and replace existing bluestone and cast stone window sills. Remove and rebuild existing parapet walls. Extend existing parapet wall at upper roof north and west facades. Remove and replace existing water table stones. Remove and replace existing window sills with new cast stone window sills. Repair crack and install expansion joint. Remove, restore and reinstall existing iron fence at west parapet wall. Provide and install new specified shelf angles. Reinforce deteriorated structural steel members exposed at all areas. Provide and install specified flashing and trim at window heads, sills and copings. Provide and install self-adhered flashing at window and door lintels and jambs at each opening. Provide and install vapor permeable air and water barrier membrane to parged backup masonry. Fully parge backup masonry as substrate for air and water barrier membrane. Remove and replace existing kalamine windows and frames new specified fire-rated windows and frames to match existing. Remove and replace existing roof system. Relocate as required and reinstall existing electrical conduit, condensate pipes, and surface mounted lighting to facilitate brick replacement. Relocate existing refrigerant pipes as required to perform masonry work. Extend height of pipes as required due to parapet wall alternation and reinstall include draining and filling of pipes.



SERVICE

Façade Restoration

Masonry Restoration
Local law 11 Repairs

Architectural Metals

Canopy, Entrance and
Gate Restoration.
Skylight Replacement

Architectural Stone

Landmark Preservation



**Howard L. Zimmerman
Architects. P.C.**

Architect/Engineer





66 Morton Street

2020 - Ongoing

Exterior and interior scaffolding. Temporary Roof. Demolition. Salvage. New Masonry. Masonry Restoration. Cast Stone and stucco. Cornice outrigger and restoration. Roofing membrane. Flashings. Flat Seam Roof. Furnish and installtion of skylights. Rebuild the top of the parapet to the wood lintels above the windows. Furnish and install angle brackets at the interior connection of the West and North Facade. Fabrication and installation of new bluestone units.

SERVICE

Roofing and Waterproofing Systems Roof Replacement

Façade Restoration Masonry Restoration Stucco Installation Façade and Stone Cleaning

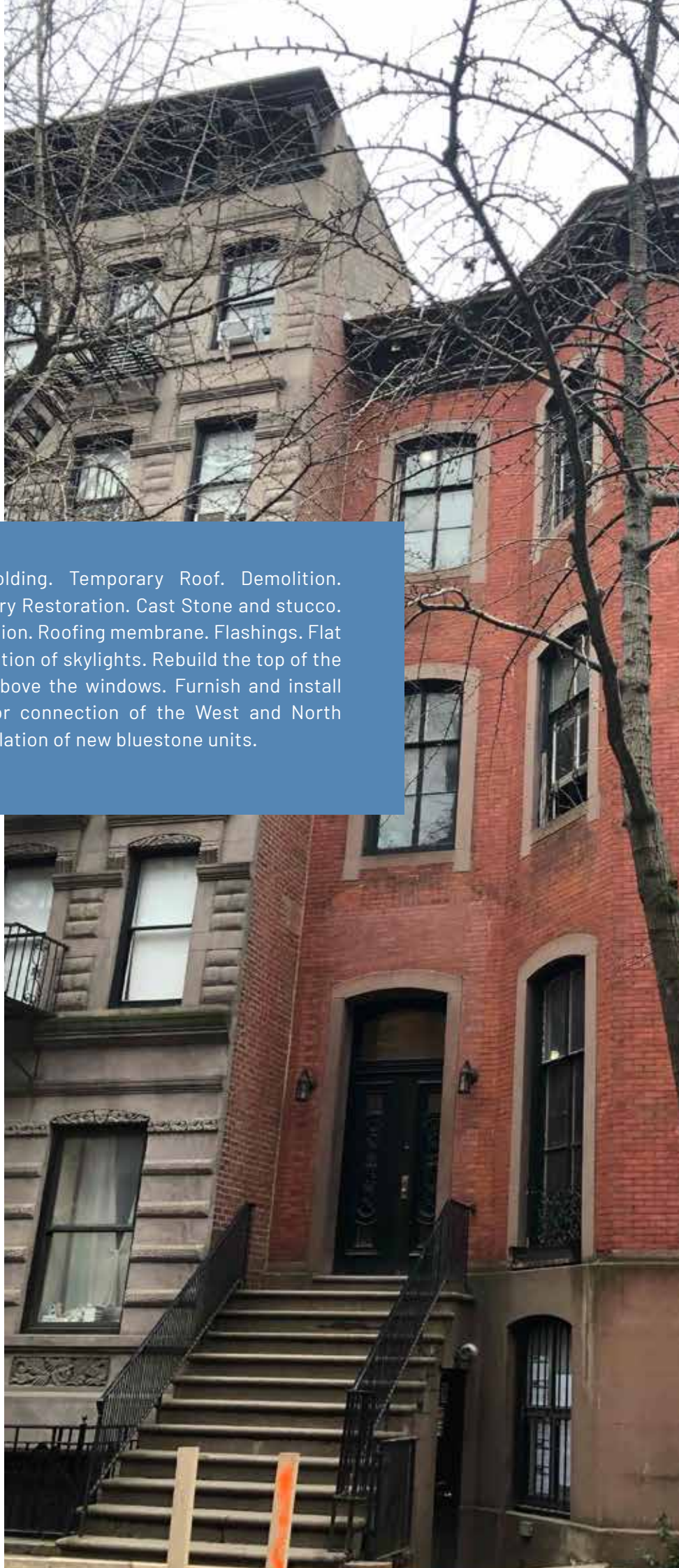
Architectural Metals Copper Roof Replacement Skylight Replacement

Architectural Stone Limestone, Brownstone and Granite Repair and Replacement

Concrete & Coating Cast Stone Installation



Sweeney + Conroy, Inc.
Architect/Engineer





940 Park Avenue, NY

2017 - 2018

Brick and masonry repairs. Lintel replacement and repairs. Terra cotta restoration. Natural stone repair. Stucco replacement. Terra-Cotta parapet repairs.

SERVICE

Roofing and Waterproofing Systems

Balcony and terrace
waterproofing

Façade Restoration

Masonry Restoration
Local law 11 Repairs

Architectural Stones

Landmark Preservation
Terra Cotta Repair and Replacement
Limestone, Brownstone and
Granite Repair and Replacement

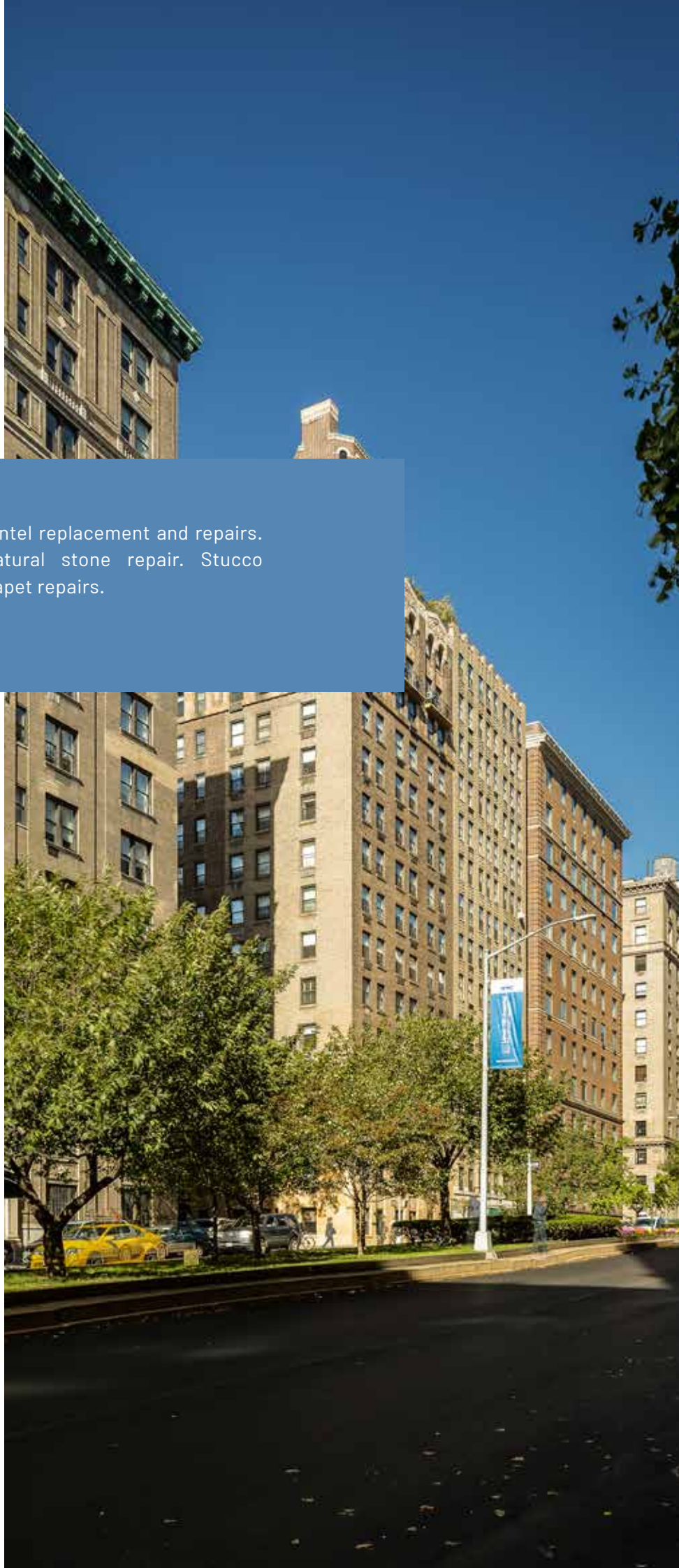
Access

Sidewalk shed
Pipe Scaffolding
Suspended Scaffolding
Material Hoist



**Bertolini Architectural
Work, D.P.C. .**

Architect/Engineer





451 Broome Street

2017 - 2018

Facade restoration. Lintel reconstruction and repairs. Terra cotta replacement. Limestone repairs. Cornice repairs. Face brick replacement.

SERVICE

Facade Restoration

Masonry Restoration
Local law 11 Repairs

Architectural Metals

Cast Iron Repair and Replacement
Cornice Restoration and Replacement
Fire escape restoration
Window Restoration

Architectural Stones

Landmark Preservation
Terra Cotta Repair and Replacement

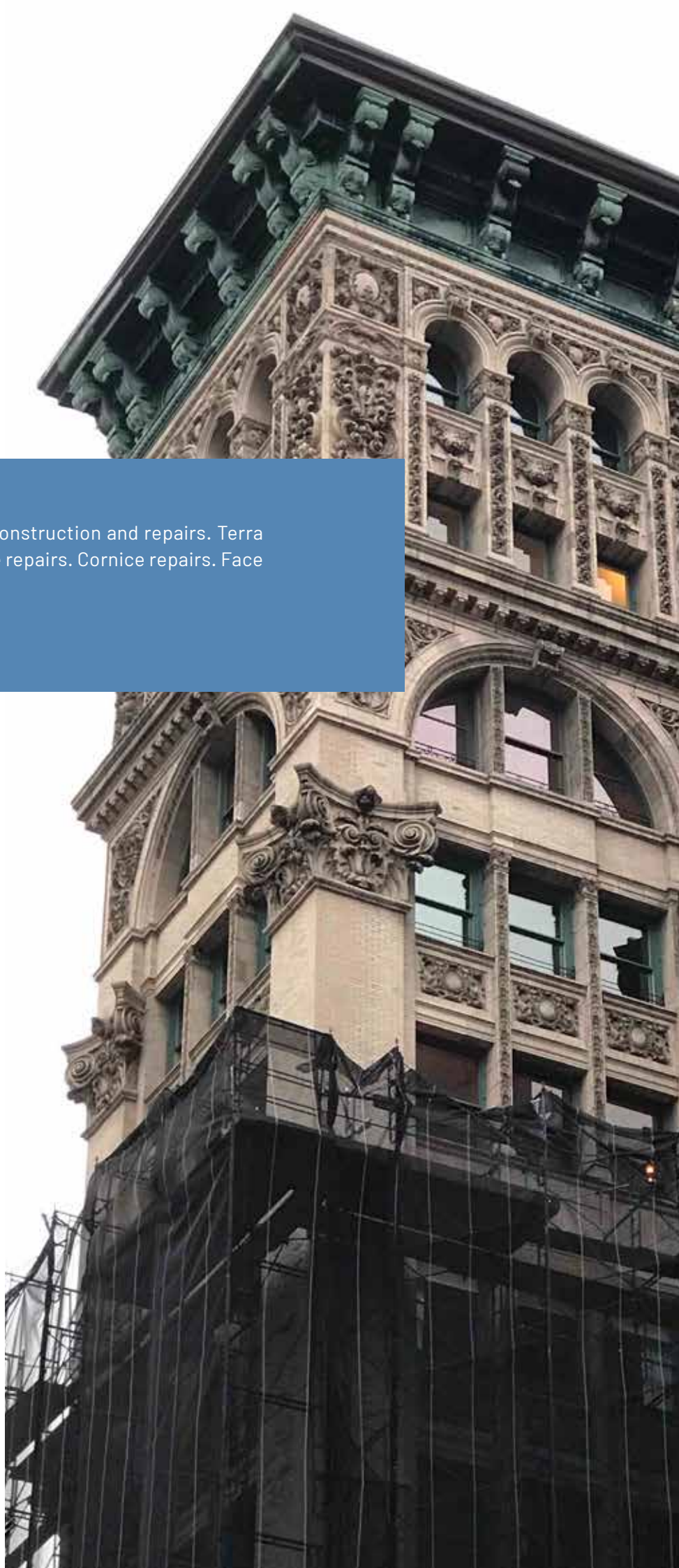
Access

Sidewalk shed
Pipe Scaffolding
Suspended Scaffolding



**Walter B. Melvin
Architects, LLC**

Architect/Engineer





THE APTHORP

2211 Broadway

2017 - 2018



Skylight replacement, Roof Replacement with new sipast system, restoration of copper cornice, bulkhead repairs, iinstallation of new pavres.



SERVICE

Roofing and Waterproofing Systems

Roof Replacement

Façade Restoration

Metal panel Systems

Architectural Metals

Cornice Restoration and Replacement
Skylight Replacement



Vidaris, Inc.

Architect/Engineer



108 Leonard Street

2016 - 2018

Originally designed by McKim, Mead & White as the original home of the New York Life Insurance Company, 108 Leonard was constructed in two phases, during the years 1894–1904. It is a designated New York City Landmark, and is listed on the National Register of Historic Places. The landmark designation includes the Italian Renaissance Revival-style exterior.

Facade restoration including new cast stone parapet wall, installation of new balustrades 6 different types, bronze railing refurbishment, crack repairs, stone tooling, removal and resetting of stones (2-3 tones each) by usage of special engineering hoists, waterproofing of watertables with SIKA.

SERVICE

Roofing and Waterproofing Systems Balcony and terrace waterproofing

Façade Restoration Masonry Restoration Local law 11 Repairs Façade and Stone Cleaning

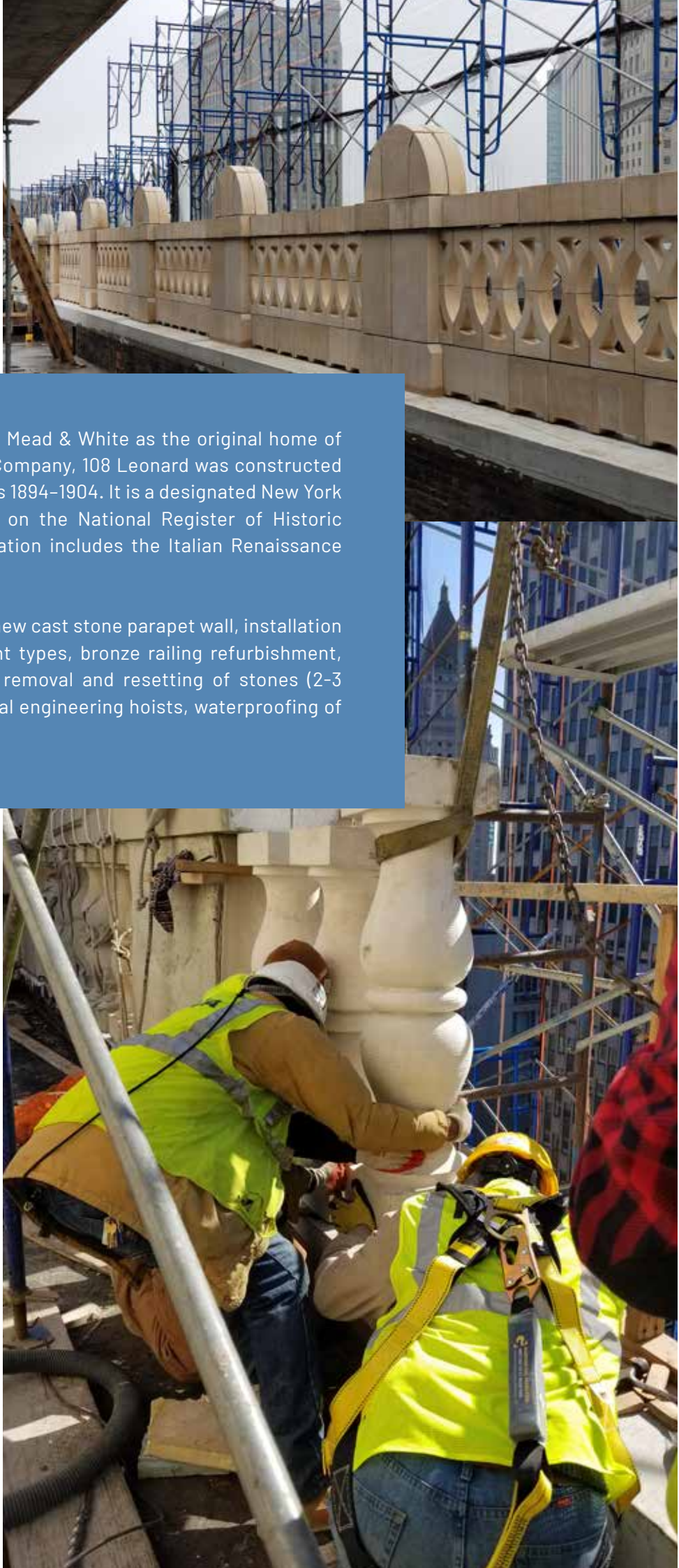
Architectural Metals Cast Iron Repair and Replacement Canopy, Entrance and Gate Restoration Railing Replacement

Architectural Stone Limestone, Brownstone and Granite Repair and Replacement Landmark Preservation Terra Cotta Repair and Replacement

Concrete & Coating Cast Stone Installation



New Line Structures
Architect/Engineer





660 Park Avenue 2016 - 2018

Exterior restoration, cleaning of façade with Rotex Vortex system, facade repairs, limestone cleaning, window painting, brick chimney reconstruction.

SERVICE

Roofing and Waterproofing Systems

Roof Replacement

Façade Restoration

Masonry Restoration
Local law 11 Repairs
Façade and Stone Cleaning

Architectural Metals

Canopy, Entrance and Gate Restoration
Fire escape restoration
Window Restoration

Architectural Stones

Landmark Preservation
Limestone, Brownstone and Granite Repair and Replacement

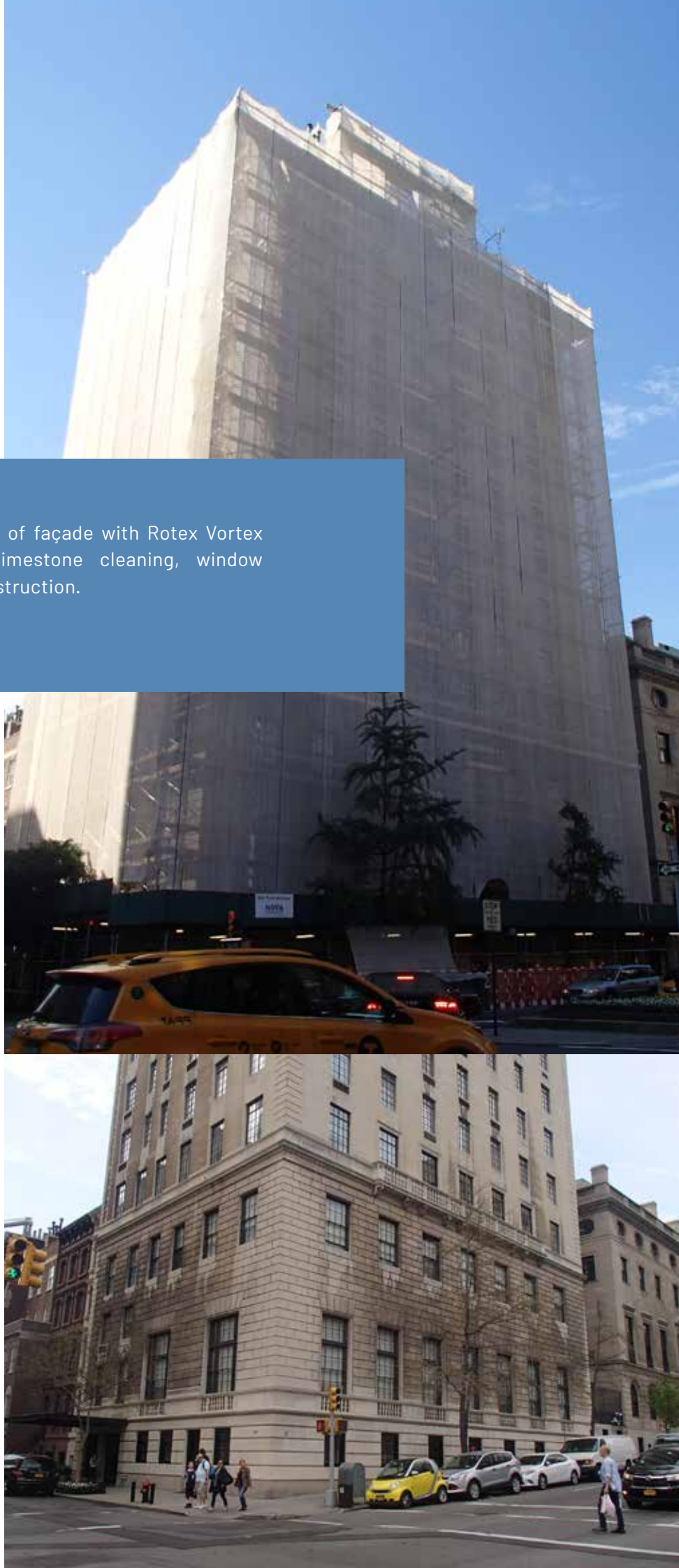
Access

Sidewalk shed
Pipe Scaffolding



**Joshep K. Blum
Co. LLP**

Architect/Engineer





THE CLEBOURNE

924 West End Avenue

2016 - 2017



Exterior repairs and balcony replacement with new cast stone units, reconstruction of corner with new cast stone corners, facade brick replacement, limestone replacement, stone replacement.

SERVICE

Façade Restoration

Masonry Restoration
Local law 11 Repairs

Architectural Metals

Canopy, Entrance and
Gate Restoration

Architectural Stones

Landmark Preservation
Terra Cotta Repair and Replacement

Access

Sidewalk shed
Suspended Scaffolding

Concrete & Coating

GFRC/GFRP
Cornice restoration



**Joshep K.
Blum Co. LLP**
Architect/Engineer



35 Crosby Street 2015 - 2017

Front wall reconstruction and exterior restoration. Cornice restoration. Reconstruction of brick masonry wall. Parapet reconstruction. Chimney reconstruction and repair.

SERVICE

Roofing and Waterproofing Systems

Roof Replacement

Façade Restoration

Masonry Restoration
Façade and Stone Cleaning

Architectural Metals

Canopy, Entrance and Gate Restoration
Cornice Restoration and Replacement
Canopy, Entrance and Gate Restoration
Fire escape restoration
Steel Restoration and Replacement
Window Restoration
Structural Shoring

Architectural Stones

Landmark Preservation
Limestone, Brownstone and Granite Repair and Replacement

Access

Sidewalk shed
Pipe Scaffolding



**Thomas A. Fenniman
Architect.**

Architect/Engineer





Saint Mark's Church in the Bowery / 131 East 10th Street

2016 - 2017

Railing repairs, installation of new paving,
installation of ADA complaint ramp

SERVICE

Architectural Metals

Cast Iron Repair and
Replacement
Canopy, Entrance and
Gate Restoration
Railing Replacement

Architectural Stone

Landmark Preservation
Limestone, Brownstone
and Granite Repair and
Replacement



**Walter B. Melvin
Architects, LLC**
Architect/Engineer





830 Park Avenue 2014 - 2015



Parapet wall replacement. Pointing. Removal and replacement of terra cotta. Terra cotta patching. Lintel replacement. Brick replacement. Courtyard roof replacement. Terra cotta and limestone sounding. Window repair.

SERVICE

Roofing and Waterproofing Systems
Balcony and terrace waterproofing

Façade Restoration
Masonry Restoration
Local law 11 Repairs

Architectural Metals
Skylight Replacement

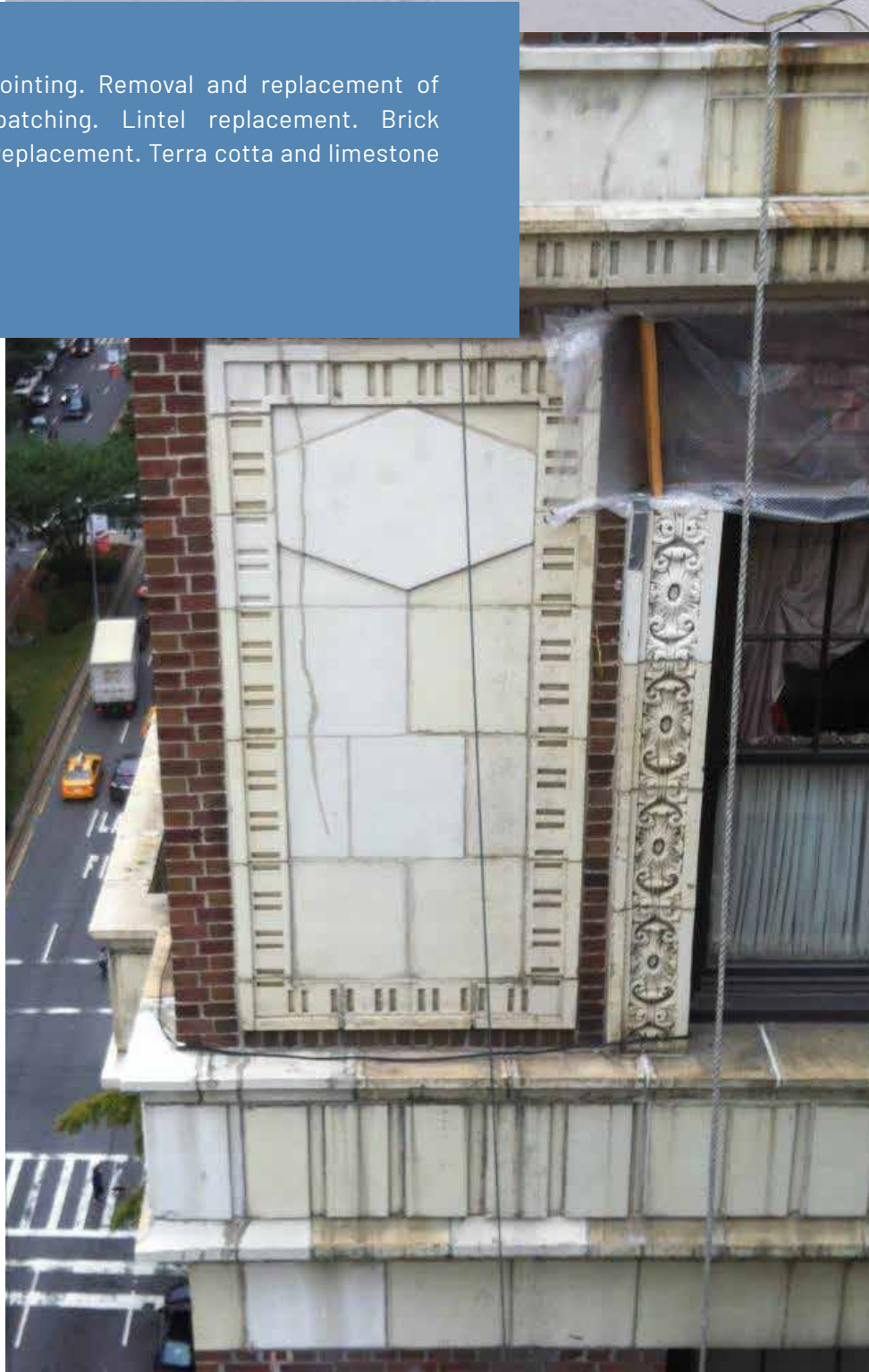
Architectural Stone
Landmark Preservation
Terra Cotta Repair and Replacement

Access
Sidewalk shed
Suspended Scaffolding



**Lawless & Mangione,
Architects &
Engineers, LLP**

Architect/Engineer





840 Park Avenue 2014 - 2015

Replacement of lintels, waterproofing, installation of new cap flashing and extension of waterproofing between windows.

SERVICE

Roofing and Waterproofing Systems
Roof Recovery

Façade Restoration
Masonry Restoration
Local law 11 Repairs

Architectural Stone
Landmark Preservation
Terra Cotta Repair and Replacement

Access
Suspended Scaffolding

Concrete & Coating
Cast Stone Installation



**Lawless & Mangione,
Architects &
Engineers, LLP**

Architect/Engineer





ASTOUR COURT

205 West 89th Street
2013 - 2015

Terrace reconstruction. West terrace greenhouse flashings, fence. Terrace two main roof replacement, including new quarry tiles, new wood lattice fencing, new copper corner at bulkhead, new railings at main roof.

SERVICE

Roofing and Waterproofing Systems

Roof Recover
Balcony and terrace waterproofing

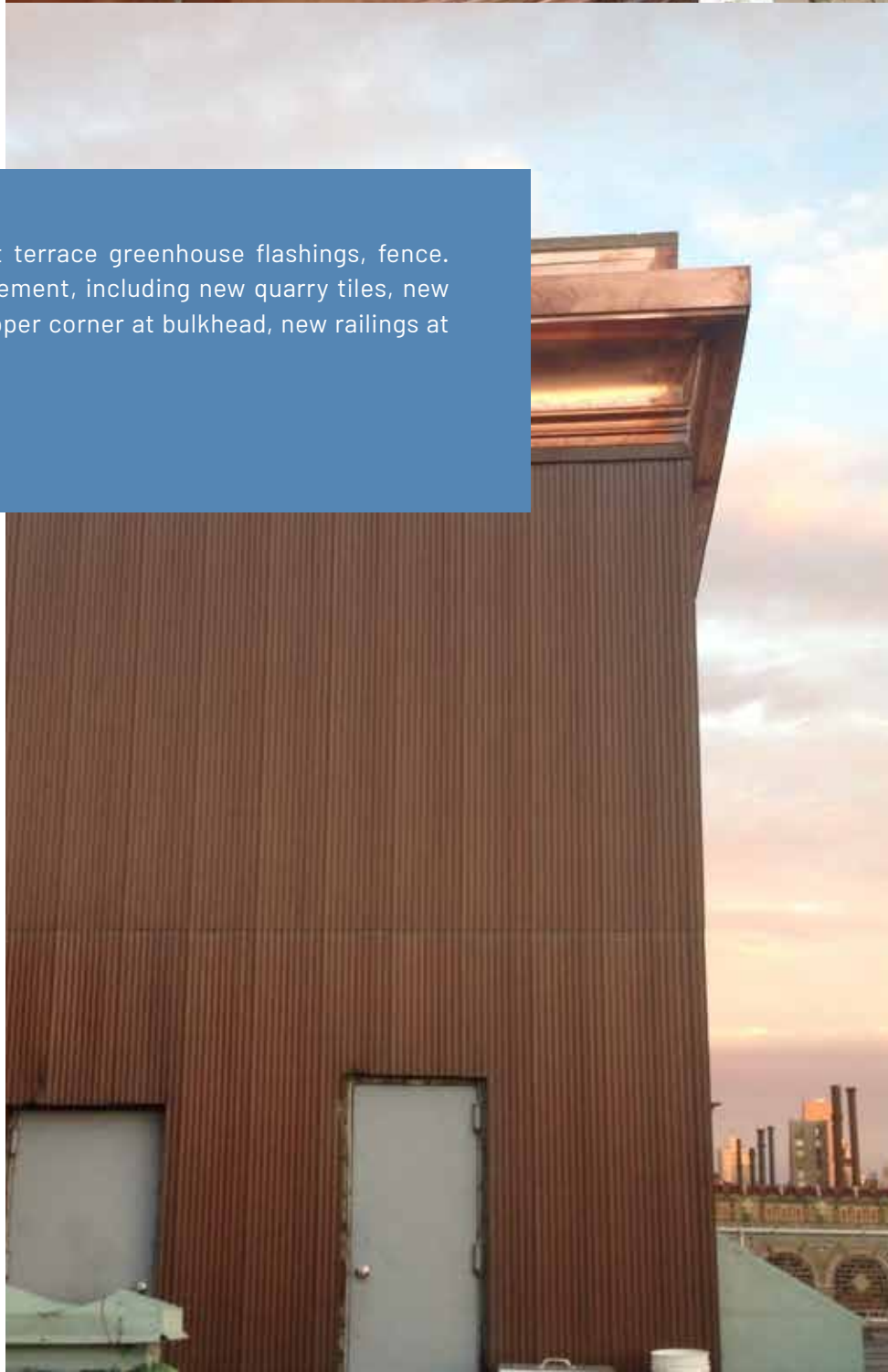
Architectural Metals

Cornice Restoration and Replacement



**Walter B. Melvin
Architects, LLC**

Architect/Engineer





2 East 70th Street

2013 - 2015

Complete reconstruction of Penthouse including new limestone window surround. New balustrade and coping stone. New Penthouse roof and terrace reconstruction.

SERVICE

Roofing and Waterproofing Systems

Roof Recover
Balcony and terrace waterproofing

Façade Restoration

Masonry Restoration

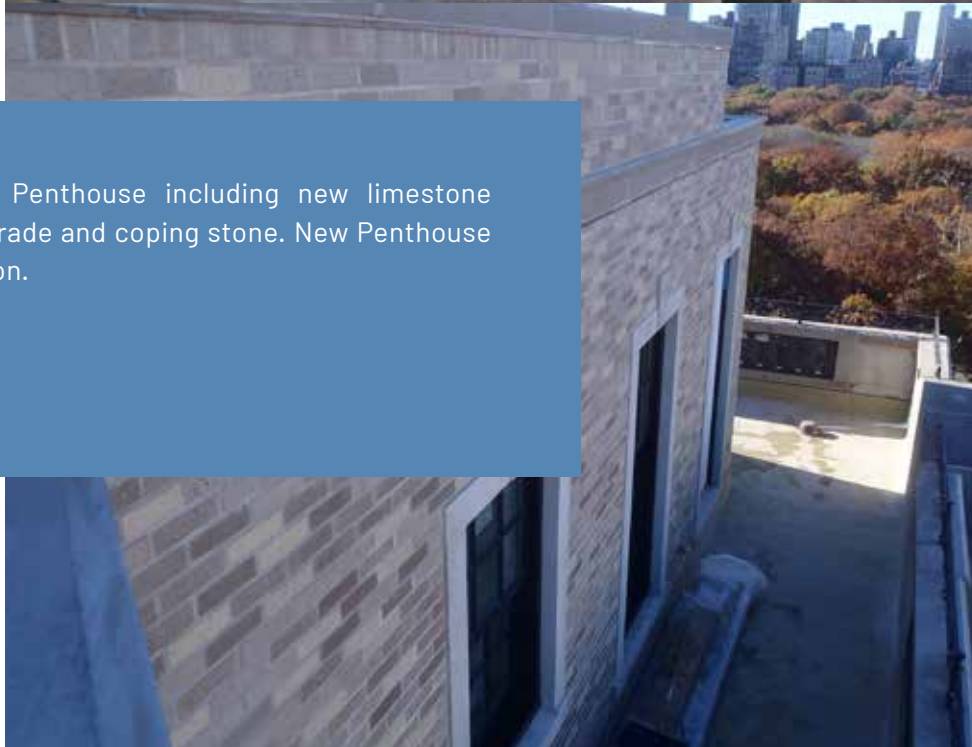
Architectural Stone

Limestone, Brownstone and
Granite Repair and Replacement



**Walter B. Melvin
Architects, LLC**

Architect/Engineer





The Players Club -
The Lucy G. Moses
Preservation Awards 2014
16 Gramercy Park South

2012 - 2015

Restoring and renewing our historic landmark and sustaining it for the future. Replacement of two floors of brownstone entrance, including new columns, restoration of railing, cornice and facade.

SERVICE

Façade Restoration

Façade and Stone Cleaning

Architectural Metals

Cast Iron Repair and Replacement
Cornice Restoration and Replacement
Canopy, Entrance and Gate Restoration
Window Restoration
Railing Replacement
Structural Shoring

Architectural Stone

Landmark Preservation
Terra Cotta Repair and Replacement



Thomas A. Fenniman,
Architect

Architect/Engineer





THE PATERNO

440 Riverside Drive

2013 - 2014

Replacement of dentils course at entire building with new pre cast coursing, rebuilding of all balconies, replacement of large amount of terra cotta stones, rebuilding of penthouse exterior, structure, extensive steel repairs in multiple locations, terra cotta corner reconstruction replacement of entire roof installation of new 16' by 16' pyramid skylight, rebuilding of parapet walls.

SERVICE

Roofing and Waterproofing Systems

Roof Replacement
Balcony and terrace waterproofing

Façade Restoration

Masonry Restoration
Local law 11 Repairs
Metal panel Systems

Architectural Metals

Cornice Restoration
and Replacement
Skylight Replacement

Architectural Stone

Landmark Preservation
Terra Cotta Repair and Replacement

Concrete & Coating

Cast Stone Installation
GFRC/GFRP
Cornice restoration



**Zaskorski &
Notaro Architects**
AIA,LLP

Architect/Engineer





15 West 67th Street

2012 - 2013



Replacement of 2 floors of vertical columns holding up two floors with interior protection of the apartment on the inside, rebuilding of parapets with extensive steel repairs, 100% repointing of steel elevation, replacement of east and west large fire escape, installation of new roofing system at all roofs including new bluestone pavers at common terrace with new aluminium railings.



SERVICE

Roofing and Waterproofing Systems

Roof Replacement
Balcony and terrace waterproofing

Façade Restoration

Masonry Restoration
Local law 11 Repairs

Architectural Metals

Fire escape restoration
Steel Restoration and Replacement
Railing Replacement
Structural Shoring

Architectural Stone

Landmark Preservation
Limestone, Brownstone and
Granite Repair and Replacement



**Walter B. Melvin
Architects, LLC**
Architect/Engineer



129 West 22nd Street 2011 - 2012

Removal of existing roof including concrete, shoring, replacement of existing beams, reinforcement of beams, new steel deck, new Siplast NVS light weight concrete roof, railing installation.

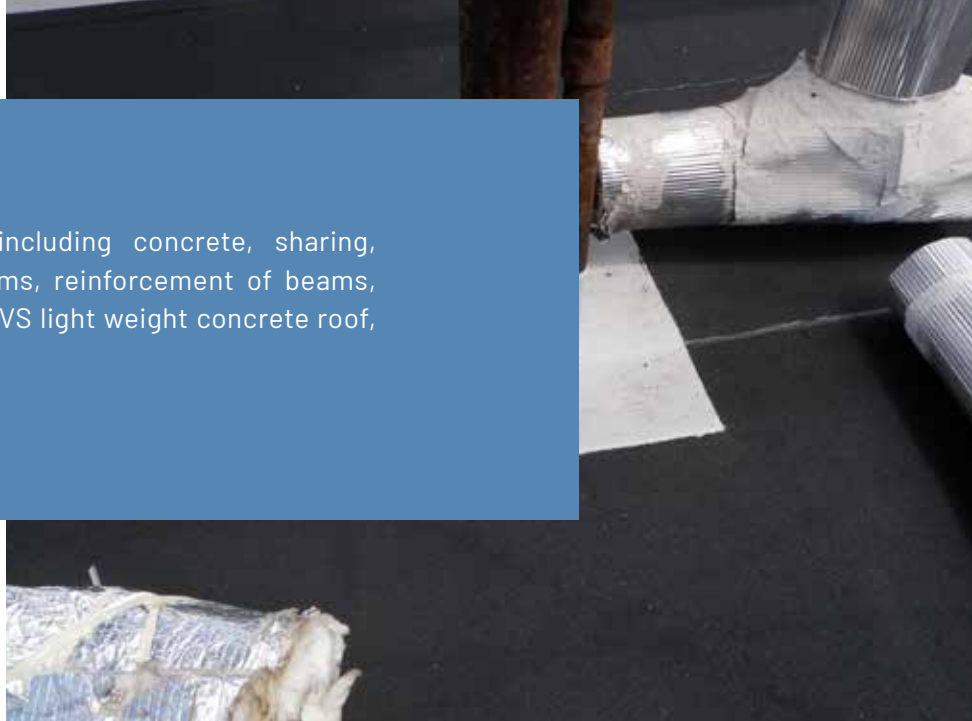
SERVICE

Roofing and Waterproofing Systems
Roof Replacement
Balcony and terrace waterproofing

Architectural Metals
Steel Restoration and Replacement
Structural Shoring



**Thomas A. Fenniman,
Architect**
Architect/Engineer





1035
Park Avenue
2010

Reconstruction of terra cotta parapets with cast stone, face brick replacement, cutting and pointing, terrace replacement, reconstruction of balcony balustrade.

SERVICE

Roofing and Waterproofing Systems

Roof Replacement
Balcony and terrace waterproofing

Façade Restoration

Masonry Restoration
Local law 11 Repairs

Architectural Stone

Landmark Preservation
Terra Cotta Repair and Replacement

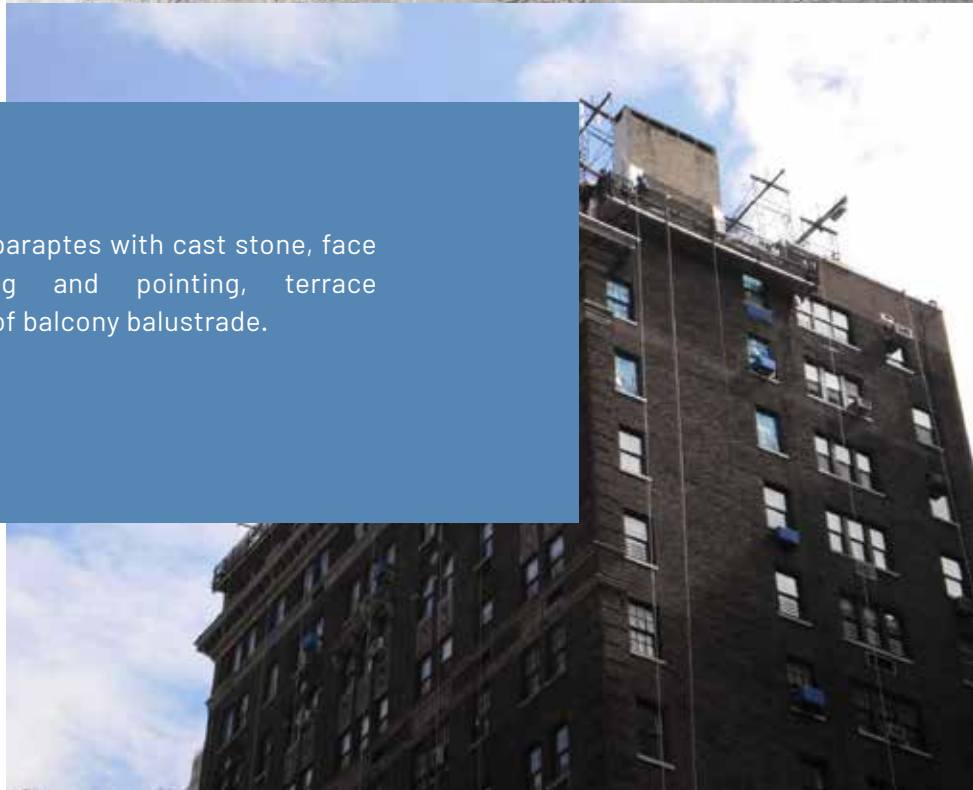
Concrete & Coating

Cast Stone Installation



Joshep K. Blum
Co. LLP

Architect/Engineer





Pratt Family Mausoleum Locust Valley

2005 - 2006

Removal and reinstallation of 30 granite mausoleum roof stones (weight up to 30,000 pounds each). And exterior stone, replacement of part of the roof stone, pointing, cleaning of exterior walls

SERVICE

Architectural Stone

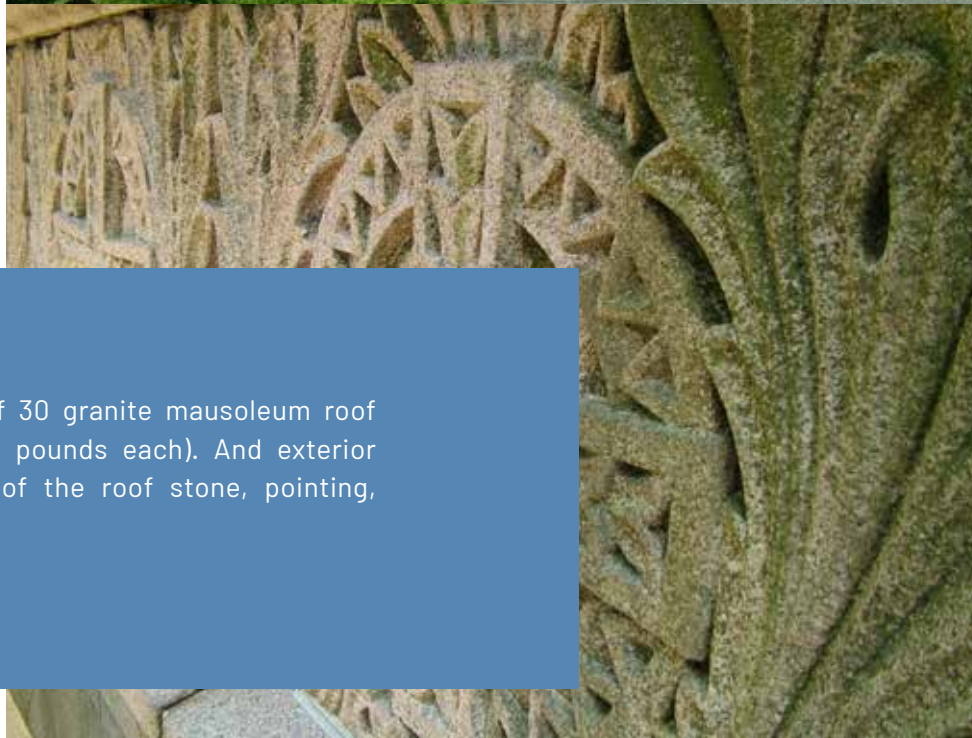
Limestone, Brownstone and
Granite Repair and Replacement

Façade Restoration

Façade and Stone Cleaning



**Walter B. Melvin
Architects, LLC**
Architect/Engineer





Box Hill

2004 - 2006

Roof replacement, flashing reglet installation, chimney cap flashing installation, wood shingles replacement.

SERVICE

Roofing and Waterproofing Systems

Roof Replacement

Architectural Metals

Cornice Restoration and Replacement
Dormer Restoration



Mr. Daniel W. White151.

Architect/Engineer





34 Gramercy Park East

2004 - 2006

[Gramercy Neighborhood Associates Historic Preservation Award 2006] Brownstone reconstruction, sculpted brownstone reconstruction, brick replacement, chimney reconstruction, cutting and pointing, slate roof repair, bluestone lintel and sill reconstruction, sidewalk reconstruction.

SERVICE

Facade Restoration
Masonry Restoration

Architectural Metals
Fire escape restoration

Architectural Stone
Landmark Preservation
Limestone, Brownstone and
Granite Repair and Replacement



**Walter B. Melvin
Architects, LLC**
Architect/Engineer





59 Bleecker Street

2018 - 2020

Roofing. New roof installation. Replacement of terra cotta. Terra cotta cutting, pointing, glazing.

SERVICE

Roofing and Waterproofing Systems
Balcony and terrace waterproofing

Façade Restoration
Façade and Stone Cleaning

Architectural Stone
Landmark Preservation
Terra Cotta Repair and Replacement



**Westerman
Construction Co, Inc.**

Architect/Engineer





BAYARD CONDICT BUILDING

65 Bleecker Street
2012 - 2013

Parapet reconstruction, steel repairs, main roof replacement, bulkhead roof replacement, new skylight, bulkhead cladding, new bulkhead stucco, terra cotta cornice repairs, lintel replacement, new sill installation.

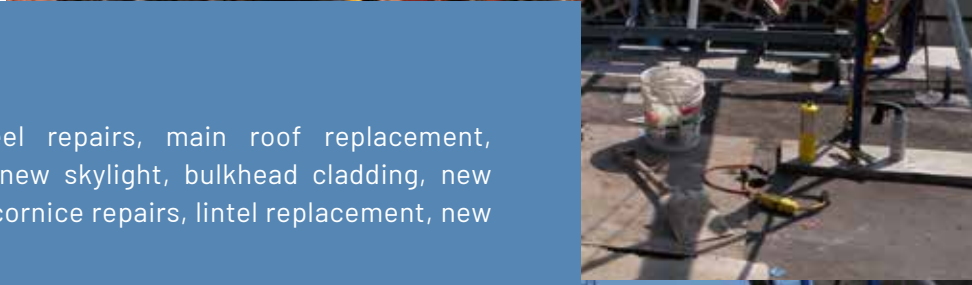
SERVICE

Architectural Stone
Landmark Preservation
Terra Cotta Repair and Replacement



**Walter B. Melvin
Architects, LLC**

Architect/Engineer

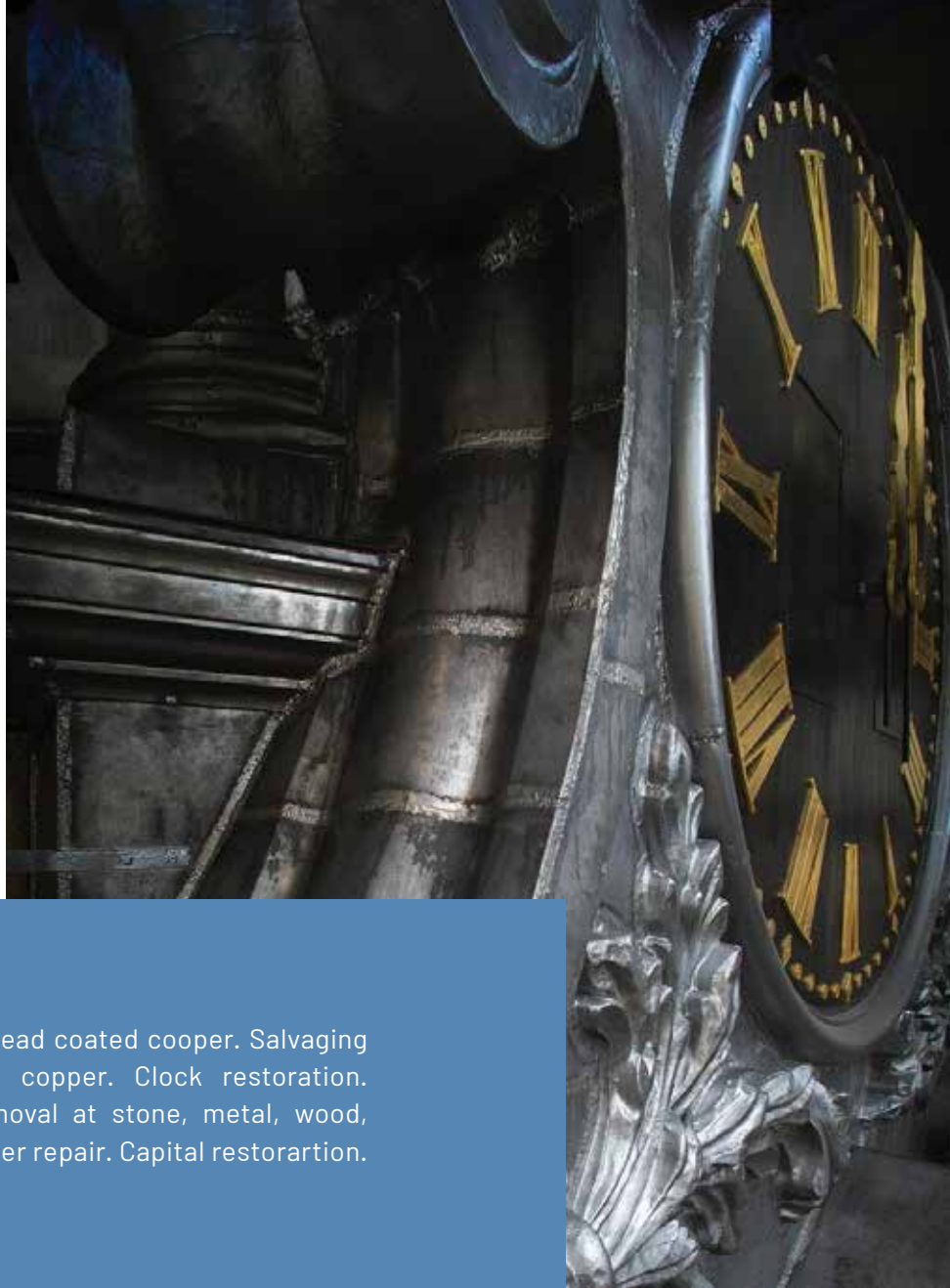




St. Paul's Chapel

2014 - 2015

Replacement of 8,000 sqf of lead coated copper. Salvaging and repairing of decorative copper. Clock restoration. Cleaning stone. Coating: removal at stone, metal, wood, plaster. Dutchman repair. Solder repair. Capital restoration. Louver restoration.



SERVICE

Architectural Metals

Cornice Restoration and Replacement
Copper Roof Replacement
Window Restoration

Architectural Stone

Landmark Preservation
Limestone, Brownstone
and Granite Repair and Replacement

Access

Sidewalk shed
Pipe Scaffolding



SuperStructures

Architect/Engineer





11-13 East 67th Street

2017 - 2018



Removal, restore and reinstall balconies railings.
Reconstruction of 3 floors of limestone facades, balustrades
replacement. Installation of stucco. Elevation cleaning,
Removal and replacement of stones.

SERVICE

Roofing and Waterproofing Systems
Roof Replacement

Façade Restoration
Masonry Restoration
Façade and Stone Cleaning

Architectural Metals
Dormer Restoration
Copper Roof Replacement

Architectural Stone
Limestone, Brownstone and
Granite Repair and Replacement



**Peter Pennoyer
Architects**

Architect/Engineer





16 West 16th Street 2019 - 2020

ROOFING REPLACEMENT & FAÇADE REPAIRS

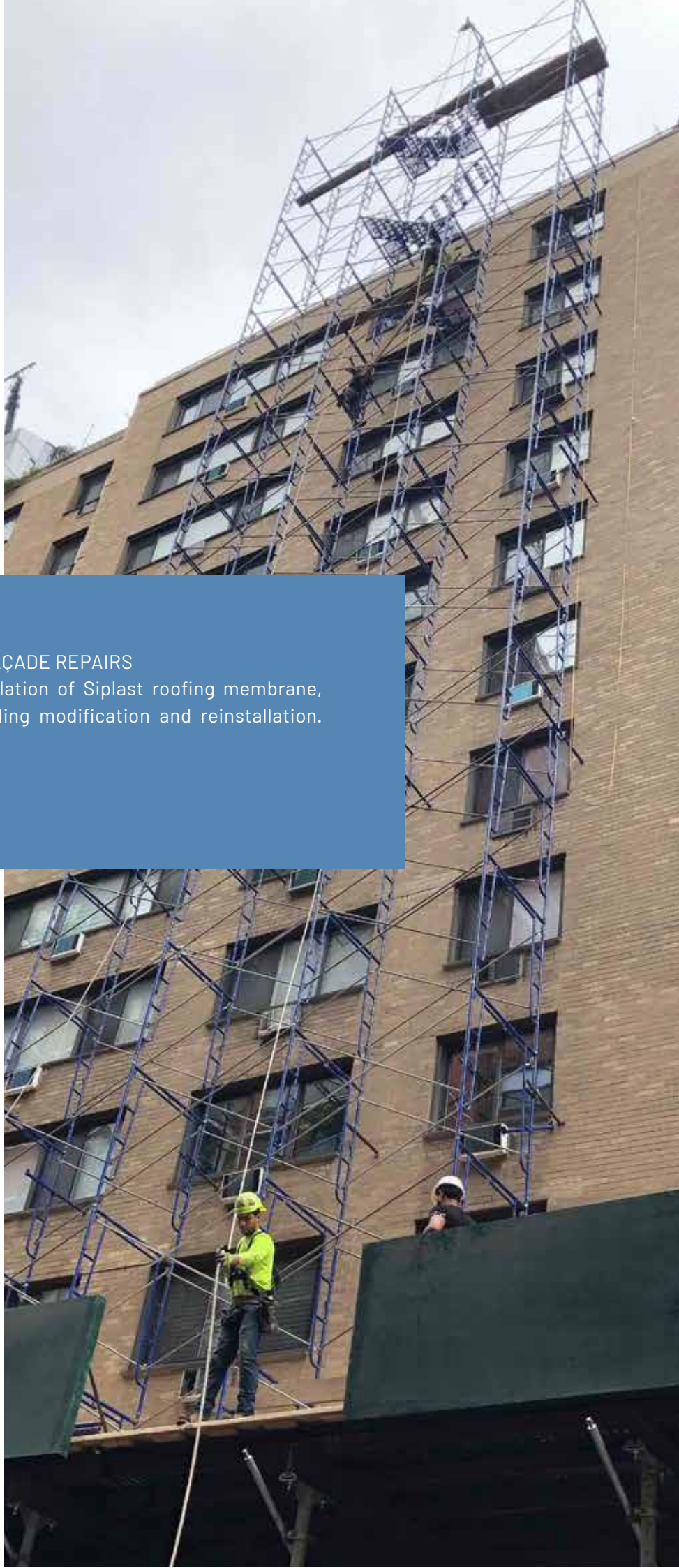
Fan Curb replacement. Installation of Siplast roofing membrane, flashing and overburden. Railing modification and reinstallation. Concrete roof deck patching

SERVICE

**Roofing and Waterproofing
Systems**
Roof Replacement



**Thomas A. Fenniman,
Architects**
Architect/Engineer





700 Park Ave 2014 - 2018



Façade reskinning, roof replacement project

SERVICE

Roofing and Waterproofing Systems

Roof Replacement
Balcony and terrace waterproofing

Façade Restoration

Masonry Restoration
Local law 11 Repairs

Architectural Metals

Window Restoration
Railing Replacement

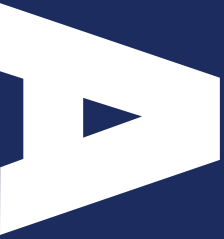
Access

Sidewalk shed
Pipe Scaffolding



**Walter B. Melvin
Architects, LLC**
Architect/Engineer





estimating@novaconstructionservices.com
75 Kent Street, Brooklyn NY 11222
T. 718 349 7770 - 718 349 1099