

PORTFOLIO



**NOVA**  
CONSTRUCTION SERVICES

## *Table of Contents*

About	06
Services	08
Our Team	10
Projects	14
Other Projects	42
Safety	64
Contact Us	67

About Nova

**01**



## ABOUT NOVA

# REVIVING STRUCTURES, BUILDING TRUST

Revolutionize your architectural visions with NOVA Construction Services, a premier exterior restoration company dedicated to elevating buildings and structures to their pinnacle of excellence.

# WITH OVER 25 YEARS OF UNPARALLELED EXPERTISE

and a track record of implementing over several hundred projects across New York, NOVA has solidified its position as a beacon of quality workmanship and exceptional customer service in the industry.

Rooted in a legacy of determination, NOVA's journey traces back to Andrzej Janczyk's arrival in New York City from Poland 45 years ago. Armed with nothing but an engineering degree and an unyielding work ethic, Andrzej embarked on a quest to transform his aspirations into reality. From humble beginnings, he climbed the ranks, mastering every facet of construction and restoration. In 1995, NOVA emerged, embodying Andrzej's commitment to reliability and integrity.

Today, under the stewardship of Eric Janczyk and Bogdan Khyliak, NOVA continues its legacy of excellence. With a steadfast focus on accountability and unwavering dedication, Eric and Bogdan spearheaded the management and planning of exterior restoration projects, ensuring that NOVA's standards remain unmatched.



## At NOVA, we believe in endless possibilities and sustainable solutions.

Communication lies at the heart of our ethos, fostering strong partnerships built on transparency and understanding. By listening intently to our clients' needs and expectations, we forge a shared vision for success.

Our commitment to excellence extends beyond aesthetics; it's about preserving the integrity and longevity of every structure we touch. Utilizing premium materials and industry-leading techniques, NOVA delivers tailored solutions that restore buildings to their former glory while fortifying them for the future.

Experience the difference with NOVA Construction Services, where the journey to architectural brilliance knows no bounds.



## SERVICES

# PRECISION SOLUTIONS CRAFTED TO PERFECTION

Our expertise in building restoration runs deep, and we are committed to breathing new life into structures, enhancing their beauty, and ensuring their longevity. Through meticulous craftsmanship and a passion for excellence, we offer a range of specialized solutions tailored to the unique needs of each project.

## SERVICES

### Façade Restoration <sup>1</sup>

Masonry Restoration  
Local Law 11 Repairs  
Metal Panel Systems  
Stucco Installation  
Façade and Stone Cleaning

### Roofing and Waterproofing Systems <sup>2</sup>

Roof Replacement  
Roof Recovery  
Slate Roof Replacement  
Balcony and terrace waterproofing

### Architectural Metals <sup>3</sup>

Cast Iron Repair and Replacement  
Cornice Restoration and Replacement  
Canopy, Entrance and Gate Restoration  
Dormer Restoration  
Copper Roof Replacement  
Skylight Replacement  
Fire Escape Restoration  
Steel Restoration and Replacement  
Window Restoration  
Railing Replacement  
Structural Shoring

### Architectural Stone <sup>4</sup>

Landmark Preservation  
Terra Cotta Repair and Replacement  
Limestone, Brownstone, Granite Repair and Replacement

### Access <sup>5</sup>

Sidewalk Shed  
Pipe Scaffolding  
Suspended Scaffolding  
Material Hoist

### Concrete & Coating <sup>6</sup>

Sidewalk Replacement  
Cast Stone Installation  
GFRC/GFRP Cornice Restoration  
Coating Repair and Installation  
Vault Repairs and Replacement  
Concrete Eyebrow and Structural Repairs

### Consulting <sup>7</sup>

Emergency Repairs  
Aerial Lift Inspections  
Suspended Scaffolding Inspection  
Mortar and Stone Analysis  
Test Cleaning and Sampling  
Roofing Analysis  
Leak Investigation  
Color Matching

# OUR TEAM



NOVA Construction Company, headquartered in New York, stands as a beacon of excellence in the restoration industry. Our exceptional team, comprising individuals from diverse cultural backgrounds, forms the backbone of our company. This diversity fuels our collective creativity and innovation, driving us towards remarkable achievements.

Guided by the Entrepreneurial Operating System (EOS), we empower our team to excel by setting clear goals and making impactful decisions. With a harmonious blend of cultures, we leverage our diverse expertise and unwavering dedication to deliver outstanding results.

## Eric Janczyk

PRINCIPAL

Overseeing building restoration projects across Manhattan, Eric brings seven years of experience as a Board Member of the New York City Special Riggers Association. He ensures compliance and safety standards are met while also directing ACI - Andromeda Community Initiative, a non-profit offering professional development opportunity in the construction and building restoration industry.

Eric shares, *The way we function sets us apart from other restoration companies. Witnessing the growth and development of everyone within NOVA is personally fulfilling for me. Transparency is a core value that I embody within the company, fostering open and honest communication with all employees and clients. I strongly believe that together, we have the power to achieve extraordinary things and leave a legacy.*

## Bogdan Khyliak

PRINCIPAL

With a master's degree in electrical and electronics engineering, Bogdan leads building restoration projects in Manhattan. His expertise as a Project Manager in construction, coupled with proficiency in Project Management Software, ensures seamless project execution. Bogdan's analytical skills drive constant improvements in company processes, fostering efficiency and innovation at every turn.

Bogdan reflects, *I am impressed by how our company stands out in the restoration industry. What sets NOVA apart is our commitment to inclusivity, providing opportunities for diverse backgrounds to join, learn, and grow. NOVA is where restoration and innovation come together, creating an exceptional journey that is truly unmatched.*



Eric Janczyk



Bogdan Khyliak

AT NOVA, WE PRIORITIZE PROFESSIONALISM IN CONSTRUCTION PROJECT MANAGEMENT, ENSURING ADHERENCE TO TIMELINES, BUDGETS, AND QUALITY STANDARDS.

Projects

*02*



## FEATURED PROJECTS

# FROM **ICONIC** STRUCTURES TO REVERED LANDMARKS,

each project showcases our unwavering commitment and meticulous craftsmanship in preserving architectural masterpieces. Explore our showcase of architectural excellence and discover the remarkable results we deliver.

## Main projects

1. 131 Duane Street, New York — The Hope Building
2. 20 West 44<sup>th</sup> Street, New York — The General Society of Mechanics and Tradesmen of The City of New York
3. 2211 Broadway, New York — The Apthorp
4. 261-11<sup>th</sup> Avenue, New York — Terminal Warehouse
5. 229 West 43rd Street, New York
6. 310 West End Avenue, New York
7. 34 Gramercy Park East, New York
8. 451 Broome Street, New York
9. 65 Bleecker Street, New York
10. 867 Madison Avenue, New York — Gertrude Rhinelanders Waldo House
11. 209 Broadway, New York — St. Pauls Chapel
12. 378 West End Avenue, New York





131 DUANE STREET, NEW YORK, NY 10013

# THE HOPE BUILDING

For over a century, 131 Duane Street, also known as The Hope Building, has remained an iconic feature of Tribeca. Originally built in 1862 as a warehouse, it stands as a symbol of the district's rich commercial heritage. Named in tribute to its visionary architect, Thomas Hope, this incredible building serves as a reminder of Tribeca's industrial legacy. Today, it retains its status as a significant piece of New York architectural heritage.

The restoration work completed by our team at Nova Construction Services on The Hope Building has earned us the prestigious Lucy G. Moses Preservation Award. This achievement highlights the skill, passion, and attention to detail that our team brings to every project, ensuring that historic structures, like The Hope Building, continue to tell the story of our city's rich past.

ARCHITECT: **WALTER B. MELVIN ARCHITECTS, LLC**  
YEAR BUILT: **1862**

 **LUCY G. MOSES PRESERVATION AWARDS (2022).**

## SCOPE OF WORK:

### Façade Restoration:

Masonry restoration, Brick wall repairs, Stucco removal, Cornice replacement and reconstruction, Dutchman repairs, Installation of cladding.

### Architectural Stone:

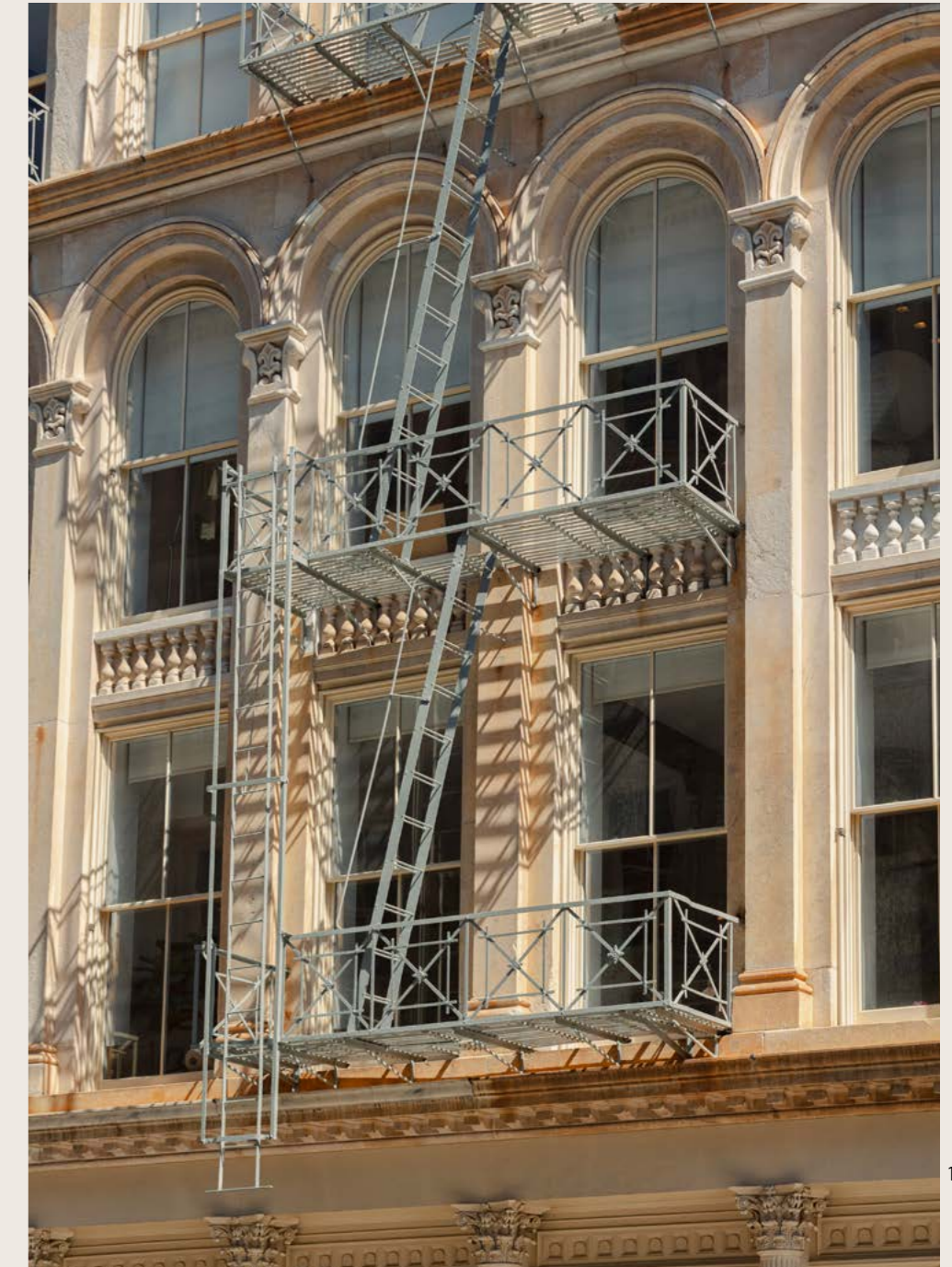
Bluestone coping installation, Fabrication and installation of Bluestone lintel, Marble repair and replacement, Granite repair.

### Architectural Metal:

Sheet metal cornice replacement, Metal window and lintel repairs.

### Access:

Sidewalk repairs, Sidewalk roadway waterproofing.





20 WEST 44<sup>TH</sup> STREET NEW YORK, NY 10036

# THE GENERAL SOCIETY OF MECHANICS AND TRADESMEN OF THE CITY OF NEW YORK

20 West 44th Street in New York City houses The General Society of Mechanics and Tradesmen along with The Library of the General Society of Mechanics and Tradesmen.

This historic institution, founded to enrich and support the city's craftsmen and tradesmen, includes the second oldest library in New York City, featuring an extensive collection of work that is over two centuries old. It is renowned for its educational contributions, notably its century-old lecture series. The building is listed on the National Register of Historic Places and is a celebrated New York City landmark, known for its architectural beauty and as a center of learning and tradition.

ARCHITECT: **EASTON ARCHITECTS**  
**HOWARD L. ZIMMERMAN ARCHITECTS & ENGINEERS DPC**  
YEAR BUILT: **1891**

### SCOPE OF WORK:

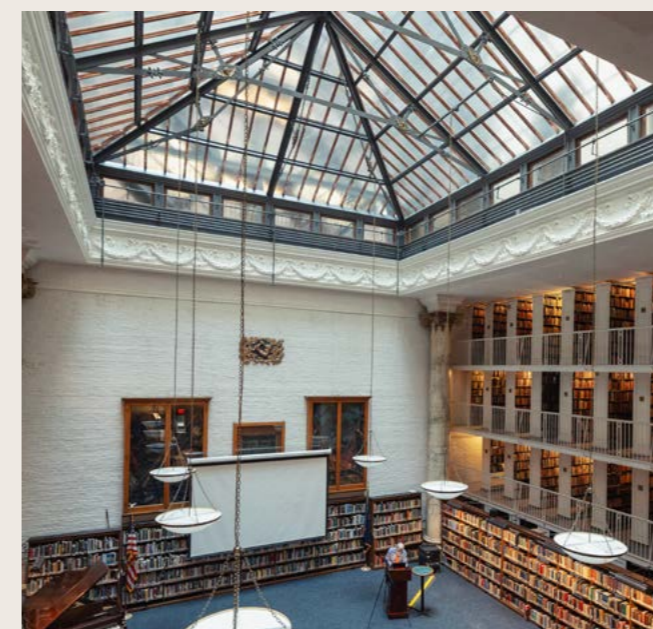
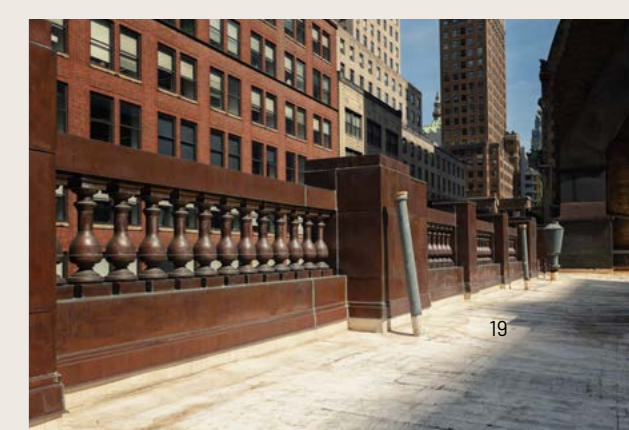
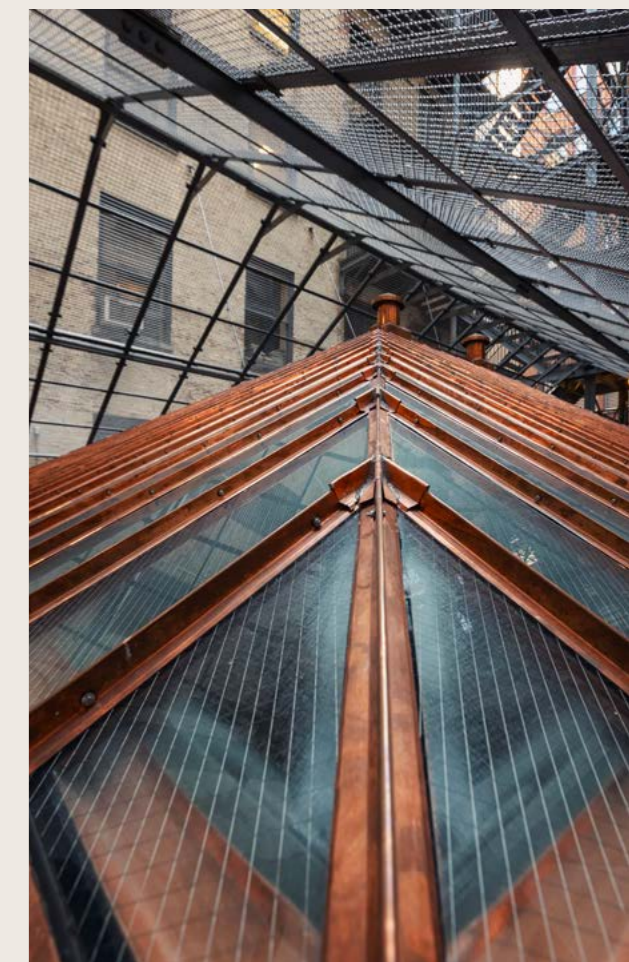
**Façade Restoration:**  
Masonry cleaning, Select face brick replacement, Masonry repointing and caulking.

**Architectural Stone:**  
Partial terra cotta replacement, Terra cotta crack repairs, Decorative terra cotta unit cleaning, Decorative terra cotta baluster reinstallation.

**Architectural Metal:**  
Complete historical copper skylight reconstruction, Steel restoration and replacement, Sheet metal flashing and trim, Resetting of main roof copper cornice, Removal and reinstallation of copper sheet metal, Structural repair: reinforcement of steel roof support beams, Replacing copper muntin caps, Ornamental bracket repair, Railing repairs, Exterior fire escape cleaning and coating, Cornice restoration, Complete balustrade reconstruction.

**Concrete & Coating:**  
Cast stone replacement, Concrete repairs.

**Roofing and Waterproofing:**  
Cold fluid applied waterproofing



2211 BROADWAY, NEW YORK, NY 10024

## THE APTHORP

2211 Broadway, better known as The Apthorp, is one of New York City's architectural masterpieces. This Italian Renaissance Revival structure, constructed in 1908, occupies an entire city block and has stood the test of time for over a century.

Designated as a historical landmark, The Apthorp contributes to the city's rich architectural heritage. Today, it serves as an apartment building, famously home to many prominent celebrities. Our restoration efforts concentrated on the sidewalk vault, meticulously planning and executing work to preserve both its structural integrity and historical authenticity.

ARCHITECT: **VIDARIS, INC.**  
YEAR BUILT: **1908**

### SCOPE OF WORK:

#### Façade Restoration:

Brick repointing, Brick replacement, Masonry arch brick replacement, Stone Dutchman repairs, Stone crack repairs.

#### Architectural Stone:

Removal and installation of granite slabs, Furnish and installation of new granite steps and planters, Stone railing installation, Stone stair restoration, Removal and resetting of existing granite entrance saddles.

#### Architectural Metal:

Removal and reinstallation of metal gates, Steel beam replacement, Trench drain installation, Areaway new steel framing installation, Reconstruction and replacement of lanterns, Fabrication and installation of new bronze elements, Repair of existing bronze elements, Replacement of steel lintels.

#### Concrete & Coating:

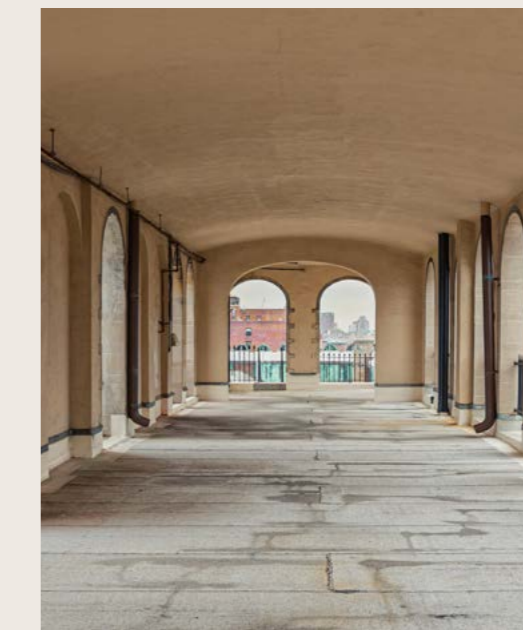
Removal and installation of sidewalk concrete pavement on existing concrete deck, Sidewalk replacement, Restoration of granite sidewalk curb.

#### Roofing and Waterproofing:

Installation of a new liquid waterproofing membrane, Installation of negative waterproofing membrane.

#### Access:

Installation of ADA ramps.



261 11<sup>TH</sup> AVENUE, NEW YORK, NY 10001

## TERMINAL WAREHOUSE

Built in 1891, New York City's Terminal Warehouse has a rich history. Originally a hub for goods transportation, it served various purposes over the decades, from being a train terminal for the NY Central Railroad to storing Broadway sets and providing relief from the summer heat.

The building once accommodated freight trains via a tunnel, but due to incidents at street level, the High Line emerged. In the '80s, it became "The Tunnel," a renowned nightclub immortalized in films like American Psycho. In 2001, "The Tunnel" closed, marking the end of an era. However, in the early to mid-2000s, the warehouse transformed again, now hosting offices, retail spaces, and galleries.

Today, ongoing restoration efforts are breathing new life into the building. Recently, landmark shutters were replaced as part of the revitalization. Join us as we contribute to preserving the legacy of this iconic structure.

ARCHITECT: • COOKFOX ARCHITECTS, DPC, • THORNTON TOMASETTI  
YEAR BUILT: 1891

[www.novaconstructionservices.com](http://www.novaconstructionservices.com)

### SCOPE OF WORK:

#### Façade Restoration:

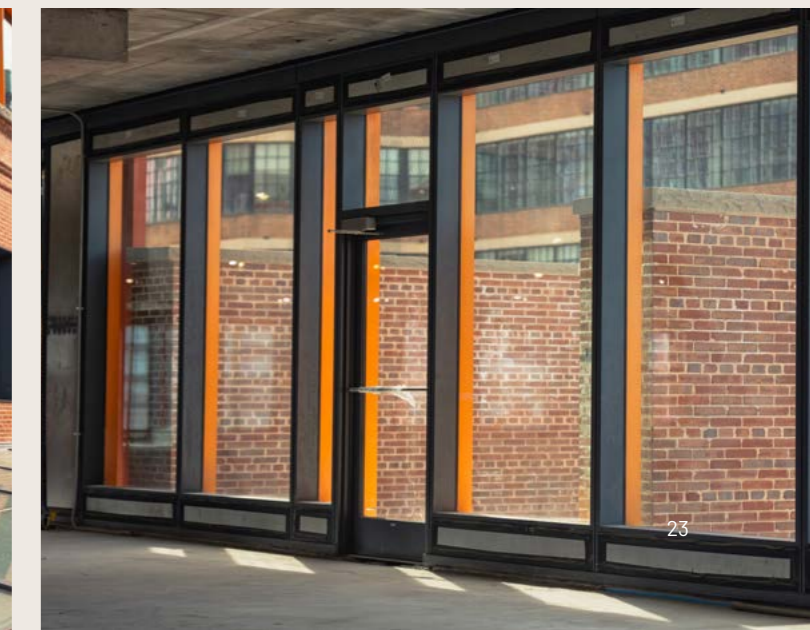
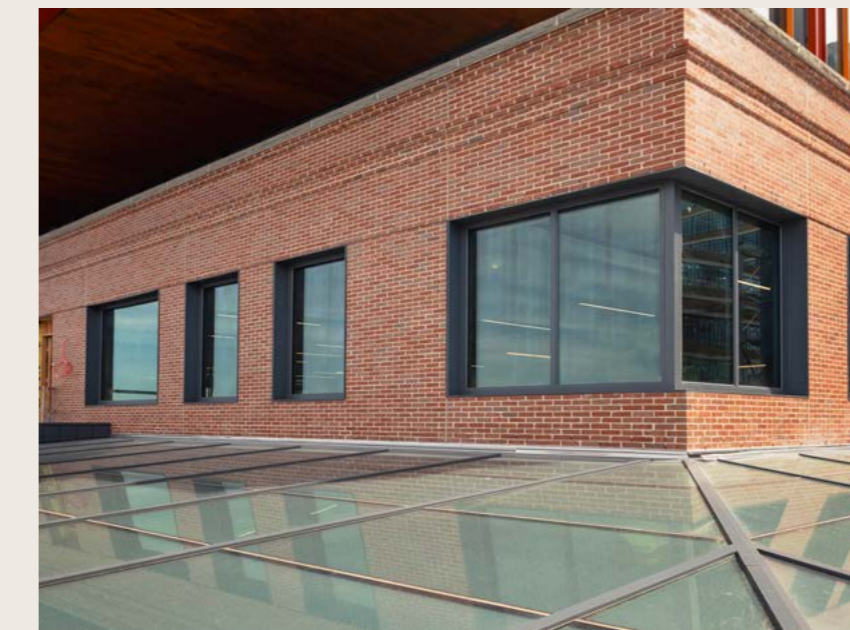
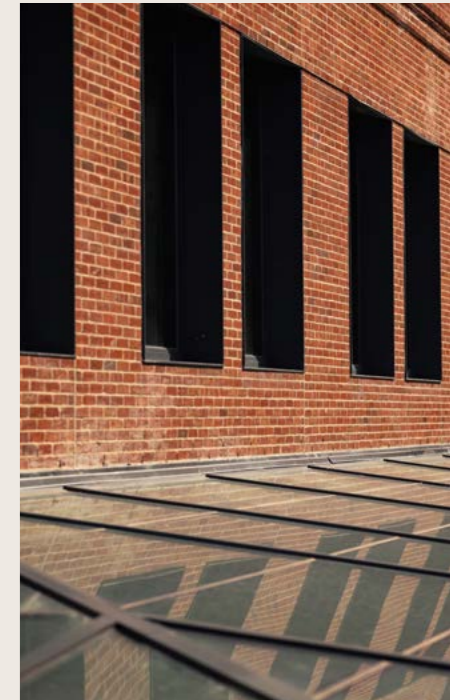
Façade cleaning, Brick masonry replacement & repointing, Face brick replacement, Stucco repair & replacement, Rebuilding of corbelled cornice sections, Masonry cleaning, Parapet rebuilding.

#### Architectural Stone:

Arch rebuilding, Bluestone sill replacement, Terra cotta panel replacement, Coping resetting & replacement, Terra cotta crack repair, New glazing installation on terra cotta units.

#### Architectural Metal:

Ornamental metal restoration: scraping, priming, & painting, Steel bumper cleaning and repair, Furnishing fabrication and installation of exterior shutters, Steel lintel repair, Copper scupper removal, Gutter removal and replacement.





229 WEST 43RD STREET, NEW YORK, NY 10036

## 229 WEST 43<sup>RD</sup> STREET

229 West 43rd Street once served as the headquarters of the notable publication, The New York Times. From 1913 to 2007, The Times called this address home; now, it stands as a timeless symbol of both history and architectural brilliance. Over a century later, this iconic building remains a center for creativity and innovation, housing various businesses. Among these businesses is Snap Inc., the owner of the social media platform Snapchat.

229 West 43rd was recognized by the Landmarks Preservation Commission in 2001 as a historical landmark. The structure not only impresses with its construction but also with the lasting mark it has left on one of the world's most renowned locations, Times Square.

ARCHITECT: **DIAZ ARCHITECT & ASSOCIATES, P.C.**  
 YEAR BUILT: **1913**

### SCOPE OF WORK:

#### **Facade Restoration:**

Masonry brick repair and replacement, Face brick replacement, Brick coating, Brick pier reconstruction.

#### **Architectural Stone:**

Replacement of 6,500 terra cotta units including: terra cotta copings, terra cotta lintels, terra cotta sills, terra cotta parapet walls, terra cotta Juliet balconies, terra cotta dormers, etc.

#### **Architectural Metal:**

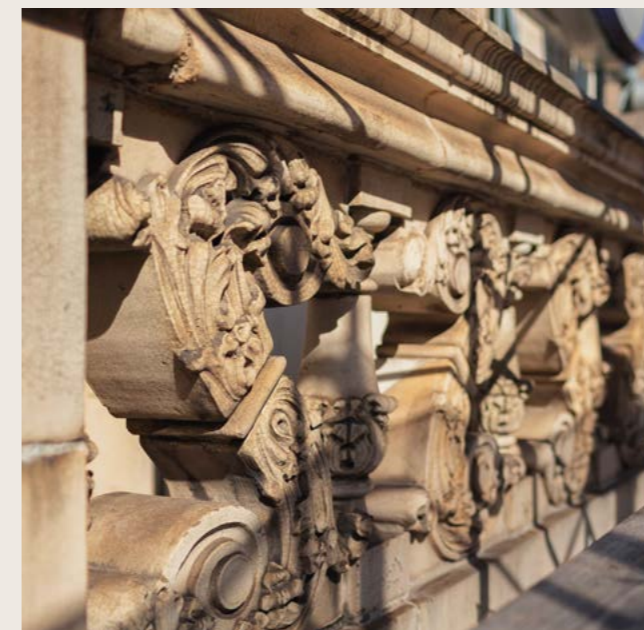
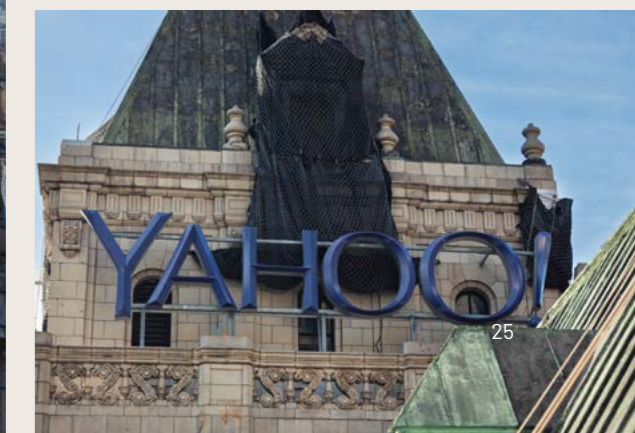
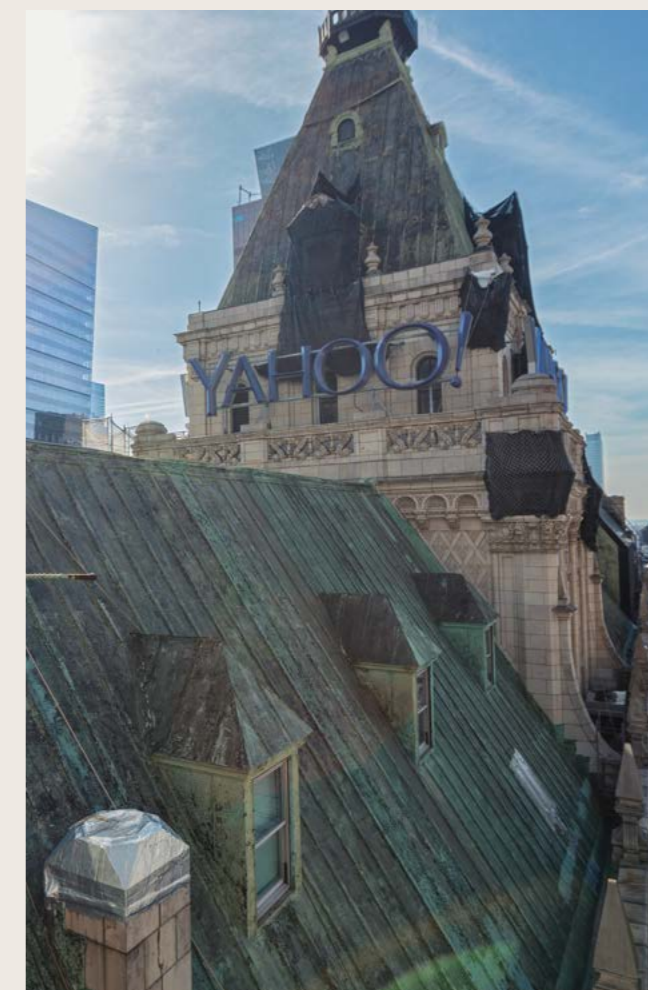
Structural steel replacement, Steel lintel replacement, Installation of new steel brackets, Steel column and spandrel repair, Cupola reconstruction, Removal and resetting of existing railings, Replacing copper gutter, Replacement of cast iron finials.

#### **Concrete and Coating:**

Installation of lightweight concrete slab.

#### **Roofing and Waterproofing:**

Partial copper roof replacement, Installation of new waterproofing membrane, New Siplast roof installation, Installation of new metal flashings, Installation of new roof drains.





310 WEST END AVENUE, NEW YORK, NY 10023

## 310 WEST END AVENUE

Our team at Nova Construction Services is excited to work on restoring an important part of New York City's history at 310 West End Avenue. Built in 1927, this post-war co-op has seen many changes over the years, both in its structure and in the city that surrounds it.

With almost a century gone by since its construction, we, at Nova, are focused on reviving the building's original beauty and ensuring it remains a part of the city's architectural legacy for future generations.

ARCHITECT: **BERTOLINI ARCHITECTURAL WORKS, D.P.C.**  
YEAR BUILT: **1927**

[www.novaconstructionservices.com](http://www.novaconstructionservices.com)

### SCOPE OF WORK:

#### **Façade Restoration:**

Masonry cleaning, Masonry repointing, Window panning, Brick replacement.

#### **Architectural Stone:**

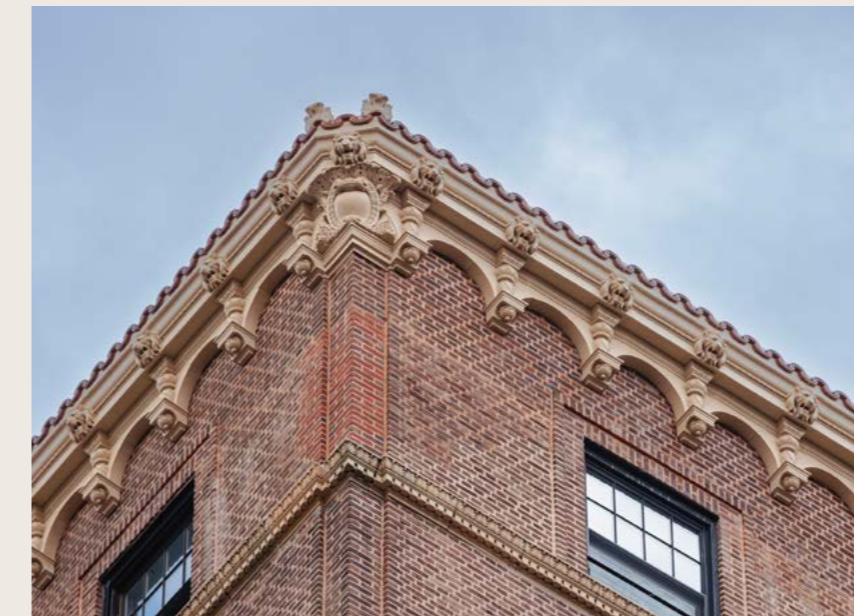
Brownstone repair and replacement, Cornice replacement with GFRP, Terra cotta cornice restoration, Terra cotta sill replacement, Restoration of terra cotta water tables, Parapet reconstruction, Furnish and installation of sandstone water tables, Partial terra cotta replacement with cast stone.

#### **Architectural Metal:**

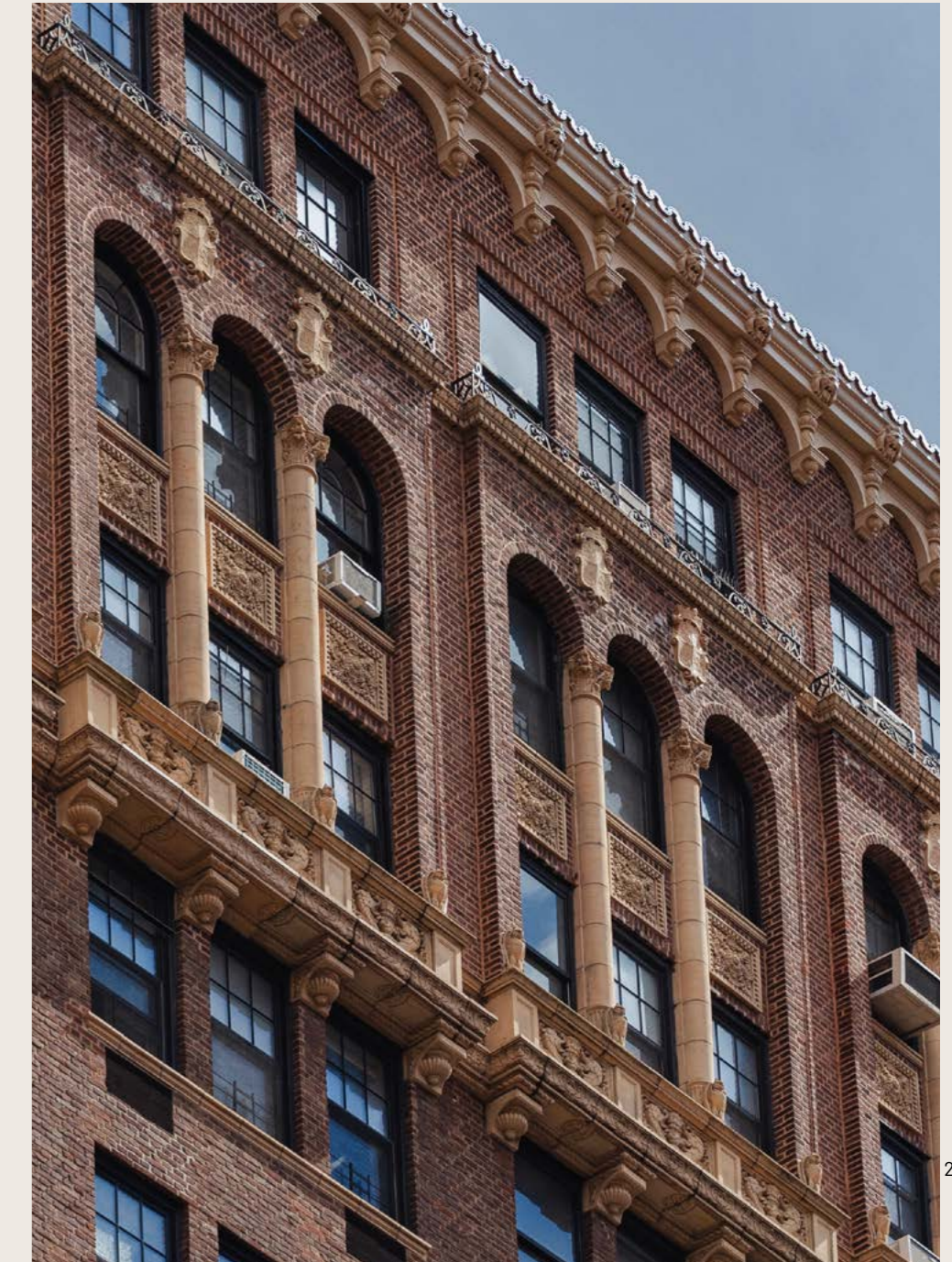
Lintel replacement, Steel reinforcement.

#### **Roofing & Waterproofing:**

Skylight replacement.



[nova@novaconstructionservices.com](mailto:nova@novaconstructionservices.com)



34 GRAMERCY PARK EAST, NEW YORK, NY 10003

## 34 GRAMERCY PARK EAST

34 Gramercy Park East, our team has had the privilege of restoring yet another historic gem. Built in 1883, this iconic, red-bricked building holds a significant place in New York City's architectural history as it was considered the first co-op building in the city.

Nestled opposite Gramercy Park, this Renaissance Revival structure embodies timeless elegance. Over the years, it has been home to numerous celebrities, earning itself a reputation as a coveted address.

The building features stunning architectural details, including beautiful Tiffany glass ceilings in the lobby. These intricate elements highlight the superb craftsmanship of the time and showcase the diverse architectural styles found throughout New York City.

ARCHITECT: **WALTER B. MELVIN ARCHITECTS, LLC**  
YEAR BUILT: **1883**

[www.novaconstructionservices.com](http://www.novaconstructionservices.com)

### SCOPE OF WORK:

#### **Facade Restoration:**

Masonry cleaning, Facade masonry repairs, Face brick repairs, Stone patching, Brickwork reconstruction.

#### **Architectural Stone:**

Brownstone, cast stone, and terra cotta repairs, Slate roof replacement and repainting.

#### **Architectural Metal:**

Fire escape painting.

#### **Roofing and Waterproofing:**

Mansard roof deck replacement, Turret sheathing replacement, Slate roof replacement.



[nova@novaconstructionservices.com](mailto:nova@novaconstructionservices.com)





Landmark Presevation

451 BROOME STREET, NEW YORK, NY 10013

# 451 BROOME STREET

Located in the vibrant SoHo district, 451 Broome Street, formerly known as the Silk Exchange Office building, underwent conversion into a co-op in 1985. This piece of NYC history, built in 1895, is now a designated New York City Landmark.

Its ornate detailing, reminiscent of the opulent decor of the Gilded Age, is sure to catch your attention, reflecting the era in which it was constructed.

ARCHITECT: **WALTER B. MELVIN ARCHITECTS, LLC**  
YEAR BUILT: **1895**

[www.novaconstructionservices.com](http://www.novaconstructionservices.com)

## SCOPE OF WORK:

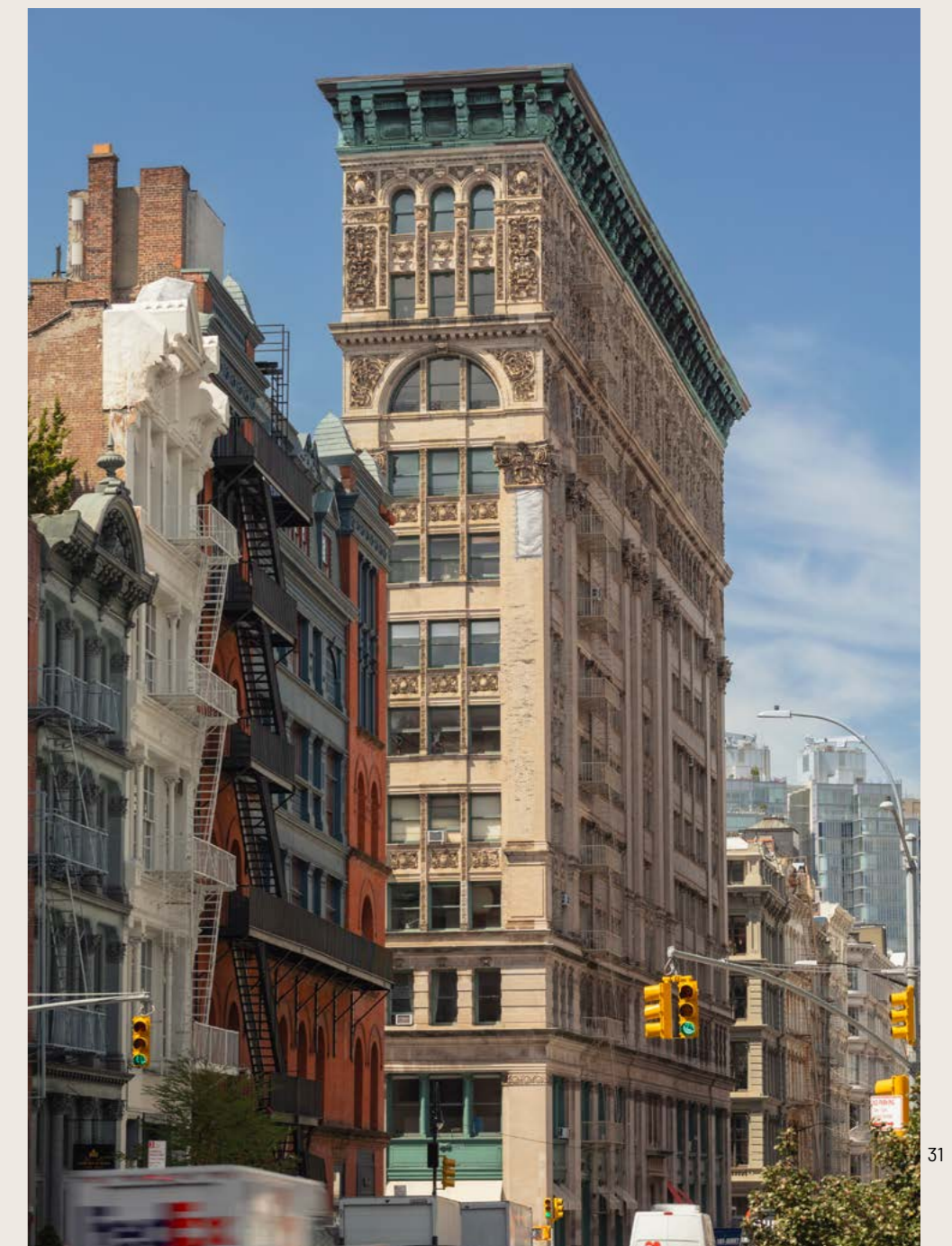
**Façade Restoration:**  
Select face brick replacement, Façade cleaning.

**Architectural Stone:**  
Replacement of 458 terra cotta units.

**Architectural Metal:**  
Cast iron repair and replacement, Fire escape repainting and restoration, Window restoration.



[nova@novaconstructionservices.com](mailto:nova@novaconstructionservices.com)







65 BLEECKER STREET, NEW YORK, NY 10012

# 65 BLEECKER STREET

Known as the Bayard Condict Building, 65 Bleeker Street holds a significant place in both New York City and national architecture. Constructed between 1897 and 1899, it exemplifies the Chicago School architectural style. Of note is its distinction as the only building in NYC designed by Architect Louis Sullivan.

The structure received designation as an NYC landmark in 1975 and achieved National Historic Landmark status in 1976. Remarkably, it stands among the earliest skyscrapers to grace the city's skyline, illustrating the dynamic evolution of urban architecture during the late 19th century.

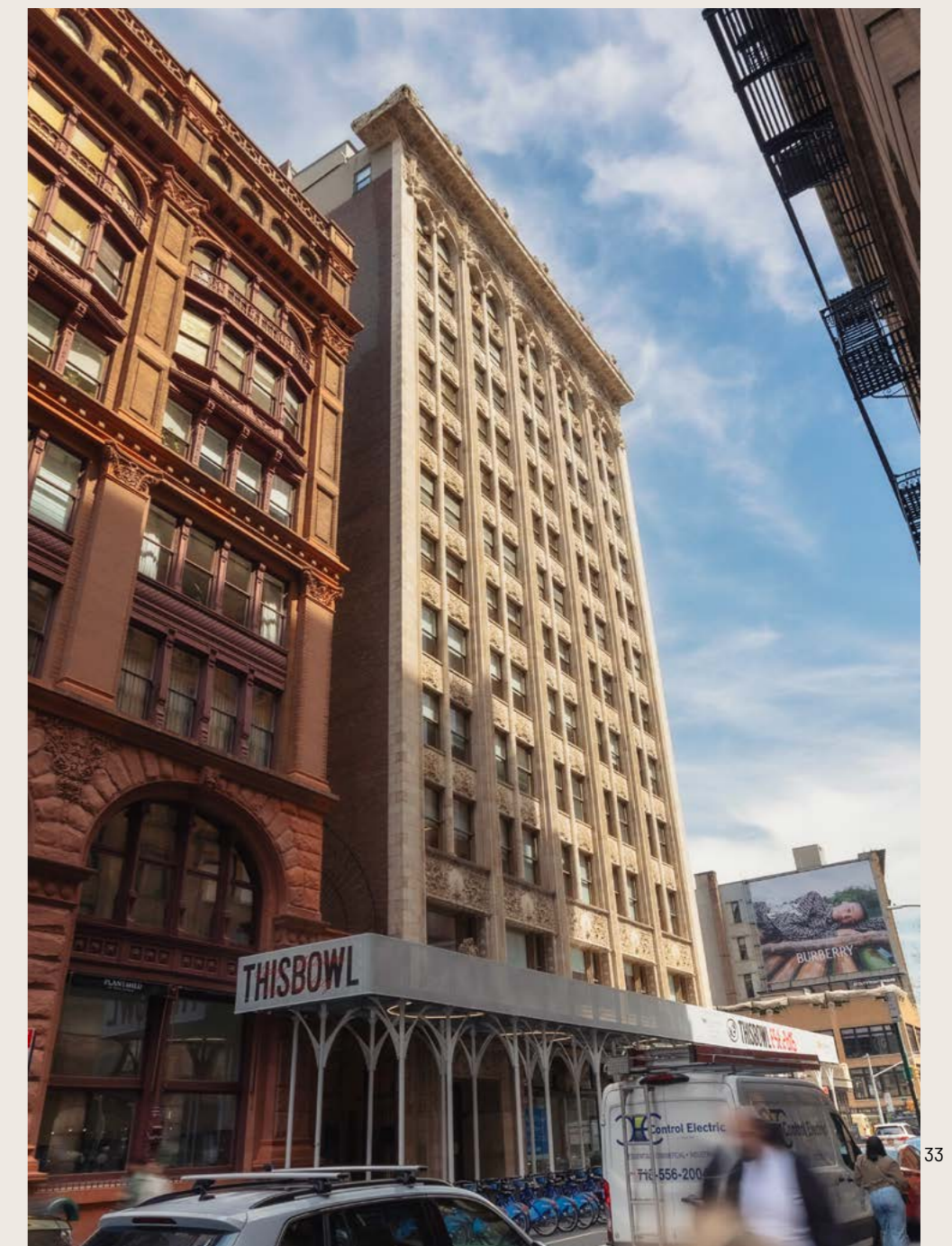
ARCHITECT: **WALTER B. MELVIN ARCHITECTS, LLC**  
YEAR BUILT: **1897-1899**

### SCOPE OF WORK:

**Façade Restoration:**  
Façade cleaning.

**Architectural Stone:**  
Stone repair and replacement, Terra cotta repair and replacement.

**Roofing and Waterproofing:**  
Installation of new roof.





867 MADISON AVENUE, NEW YORK, NY 10021

# GERTRUDE RHINELANDER WALDO HOUSE

Ralph Lauren Men's Flagship Store

Originally built in 1898, 867 Madison Avenue stands as an architectural gem in the heart of New York City. Built in the Beaux Arts style, this magnificent structure, known as the Rhinelanders Mansion, earned landmark status in 2001 by the Landmark Preservation Commission.

Nearly a century later, in 1983, fashion icon Ralph Lauren transformed the mansion into a flagship store. Under his guidance, the mansion underwent meticulous renovations, ensuring its historical significance remained intact.

Today, our restoration project aims to honor the legacy of 867 Madison Avenue while ensuring its longevity for generations to come. Led by Howard Zimmerman Architects and AMP Engineers, DPC, our team is dedicated to preserving the mansion's architectural integrity.

ARCHITECT: **HOWARD L. ZIMMERMAN ARCHITECTS & ENGINEERS, DPC**  
YEAR BUILT: **1898**

## SCOPE OF WORK:

### Façade Restoration:

Façade cleaning, Masonry repairs, Parapet reconstruction, Face brick masonry replacement.

### Architectural Stone:

Decorative limestone unit replacement, Coping stone resetting, Windowsill replacement, Replacement of red slate roof, Selective limestone cleaning, Limestone Dutchman repairs, Flat Limestone patching repair, Limestone crack repair, Limestone repointing, Decorative limestone finial replacement.

### Architectural Metal:

Copper cladding replacement and patination, Reinstallation of decorative copper ridge cap flashing, Window lintel replacement, Repair of existing decorative copper finials, Steel guardrail replacement.

### Roofing & Waterproofing:

Roof slate replacement, Membrane roof replacement, Roof replacement, Removal and replacement of copper flashings.





Landmark Presevation

209 BROADWAY, NEW YORK, NY 10007

# ST. PAUL'S CHAPEL

Located in Lower Manhattan is St. Paul's Chapel, a part of the parish of Trinity Church Wall Street. With its construction dating back to 1766, preceding the American Revolution, this truly historical structure stands out amidst the modern skyline of New York City.

As Manhattan's oldest surviving church building, it has welcomed through its doors respected figures like George Washington, solidifying the structure's significance not just to the city of New York, but also to the nation.

However, the Chapel's significance extends beyond its age. It stands as a symbol of the enduring spirit of New York City. Having weathered numerous disasters, including fires and the tragic events of 9/11, St. Paul's Chapel remains a testament to the resilience and strength New York City embodies so well.

ARCHITECT: **SUPERSTRUCTURES ENGINEERS + ARCHITECTS**  
YEAR BUILT: **1766**

### SCOPE OF WORK:

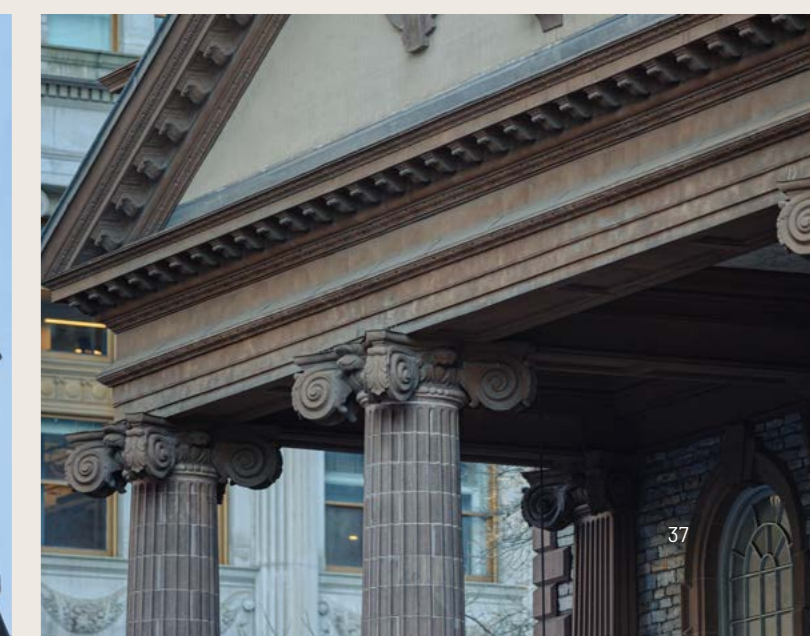
**Façade Restoration:**  
Masonry cleaning, Dutchman repairs.

**Architectural Stone:**  
Brownstone replacements and repairs.

**Architectural Metals:**  
Replacement of 8,000 square feet of lead-coated copper, Repair of decorative copper, Solder repairs, Installation of missing cast iron elements, Fence repair.

**Roofing & Waterproofing:**  
Lead copper roof replacement.

**Other:**  
Clock restoration, Louver restoration.





378 WEST END AVENUE, NEW YORK, NY 10024

# 378 WEST END AVENUE

378 West End Avenue is a condominium that beautifully intertwines the rich history of New York with contemporary luxury.

It consists of two distinct buildings: one erected in 1915 as a tower designed by Schwartz & Gross, replacing the former Collegiate School, and the other, an 18-story tower envisioned by COOKFOX Architects. Presently, the condominium is home to 58 residents.

ARCHITECT: **COOKFOX ARCHITECTS, DPC**  
YEAR BUILT: **1915**

### SCOPE OF WORK:

**Façade Restoration:**  
Façade cleaning.

**Architectural Stone:**  
Limestone Dutchman repairs, Limestone crack repairs, Juliet balcony redesign, Rebuilding of balcony with GFRC, Reconstruction of historic cresting, Terra cotta medallion repair and cleaning, Removal and replacement of terra cotta units.

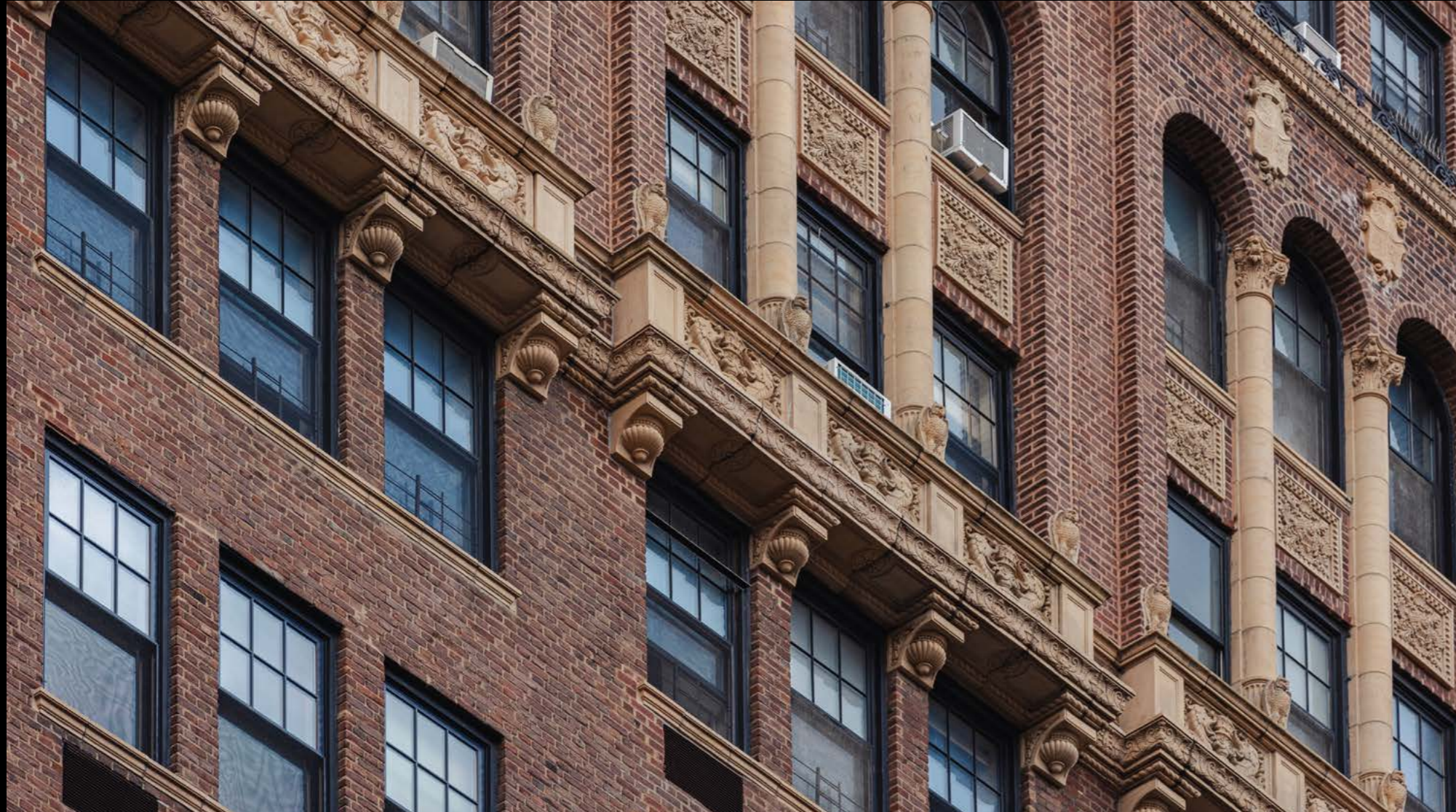
**Architectural Metals:**  
Steel lintel replacement.

**Roofing & Waterproofing:**  
Steel column waterproofing, Installation of new waterproofing membrane.



Other Projects

**03**



310 West End Avenue

## Other Projects

1. 150 Central Park South, New York — Hampshire House
2. 11-13 East 67<sup>th</sup> Street, New York
3. 243 Riverside Drive, New York
4. 141 East 88<sup>th</sup> Street, New York — Phillips House
5. 410 Riverside Drive, New York
6. 505 Laguardia Place, New York
7. 564 Park Avenue, New York — Colony Club
8. 66 Morton Street, New York
9. 940 Park Avenue, New York
10. 660 Park Avenue, New York
11. 924 West End Avenue, New York — The Clebourne
12. 48-50 West 69<sup>th</sup> Street, New York
13. 131 East 10<sup>th</sup> Street 830 Park Avenue, New York — Saint Marks Church In The Bowery
14. 16 Gramercy Park South 440 Riverside Drive, New York — The Players Club
15. 15 West 67<sup>th</sup> Street, New York
16. Pratt Family Mausoleum - Locust Valley, New York — Pratt Family Mausoleum
17. 59 Bleecker Street, New York
18. 16 West 16<sup>th</sup> Street, New York
19. 700 Park Avenue, New York
20. 108 Leonard Street, New York



150 CENTRAL PARK SOUTH, NEW YORK

# HAMPSHIRE HOUSE

150 Central Park South, also known as The Hampshire House, holds a prestigious and enviable position directly opposite Central Park. This iconic location has a storied history, shaped by the socioeconomic challenges of the Great Depression, which temporarily halted its construction. Originally built in 1938 as a rental building, it transitioned into a hotel a decade later before being converted

into a cooperative in 1949. Hampshire House rises 35 stories high and features 220 residential units today. One of its most striking features is a large and steep copper roof. Additionally, its distinctive Art Deco architectural style not only encapsulates the era, but it also enhances the New York City skyline with its timeless elegance.

ARCHITECT: **BERTOLINI ARCHITECTURAL WORKS, D.P.C.**  
YEAR BUILT: **1938**



SCOPE OF WORK:

**Façade Restoration:**

Facade rebricking, Corner reconstruction, Installation of bricks at parapets.

**Architectural Metal:**

Cleaning priming and painting of steel column, Door lintel replacement, Removal and resetting of railings.

**Roofing & Waterproofing:**

Steel column waterproofing, Installation of liquid membrane roofing, Waterproofing under sills, Installation of new base flashing.

**Concrete & Coating:**

Installation of new cast stone units, Removal of concrete sill, Installation of new GFRP balconies.

11-13 EAST 67<sup>TH</sup>, NEW YORK

# 11-13 EAST 67<sup>TH</sup>

11-13 East 67th Street, located in the Upper East Side Historic District, is a rare architectural treasure. Originally two separate buildings, they have been combined to showcase a blend of Neo-French Classical and English Neo-Classical styles.

This fusion of architectural influences creates a captivating structure that stands as a testament to both the district's rich heritage and the city's commitment to innovation and preservation.

ARCHITECT: **PETER PENNOYER ARCHITECTS**  
YEAR BUILT: **1913; 1921**



SCOPE OF WORK:

**Façade Restoration:**

Masonry restoration, Façade stone cleaning.

**Architectural Stone:**

Limestone, Brownstone, and Granite repair & replacement.

**Architectural Metal:**

Dormer restoration.

**Roofing and Waterproofing:**

Copper Roof Replacement.

243 RIVERSIDE DRIVE, NEW YORK

## 243 RIVERSIDE DRIVE

243 Riverside Drive, also known as The Cliff Dwelling, is an iconic building in the Upper West Side, originally constructed as an apartment hotel. Built in 1914, this magnificent structure is over a century old. Designed by the renowned architect Herman Lee Meader, the building impresses

not only with its age and location but also with its unique external design. Featuring motifs inspired by Mayan, Aztec, and Native American cultures, the facade of The Cliff Dwelling elevates it beyond mere architecture to a true work of art.

ARCHITECT: **ARCHITECTURE RESTORATION CONSERVATION, PC**  
YEAR BUILT: **1914**



### SCOPE OF WORK:

#### Façade Restoration:

Brick pointing, Brick crack repair, Painting of cladding.

#### Architectural Stone:

Partial glazing of terra cotta units, Terra cotta Patching, Deep stain removal of terra cotta sills, Architectural coating on main entrance stones, Removal and resetting of existing camelback coping stones.

#### Architectural Metal:

Painting of window guard, Painting of fire escapes, Metal lintel replacement, Fire escape railing repairs, Removal and reinstallation of existing railings.

#### Concrete & Coating:

Cast stone panel restoration, Concrete crack repair, Furnish and installation of new cast stone units.

#### Roofing and Waterproofing:

Replacement of roof base flashing system, Cast stone water table liquid waterproofing, Roof drain replacement.

141 EAST 88<sup>TH</sup> STREET, NEW YORK

## PHILLIPS HOUSE

Located in the historic Carnegie Hill district, Phillip House, also known as 141 East 88th Street, stands as a prime example of 1920s architecture that has been thoughtfully brought into the 21st century. Originally constructed in 1927, this pre-war building reflects the period's distinctive design contributing to New York's rich architectural heritage. In 2013, Phillip

House underwent a significant transformation, converting into condominiums while preserving its historic exterior. Inside, the renovation was comprehensive, blending historical elements with contemporary design to create a living space that respects its past while embracing modern functionality and aesthetics.

ARCHITECT: **LAWLESS + MANGIONE**  
YEAR BUILT: **1927**



### SCOPE OF WORK:

#### Façade Restoration:

Masonry restoration, Window restoration, Cornice restoration.

#### Architectural Stone:

Terra cotta repair and replacement, Cornice Restoration.

#### Architectural Metal:

Window restoration.

#### Roofing and Waterproofing:

Roof replacement, Balcony and terrace waterproofing.



410 RIVERSIDE DRIVE, NEW YORK

## 410 RIVERSIDE DRIVE

Built in 1909, 410 Riverside Drive, which has also been known as Riverside Mansions—has stood in the historic Morningside Heights district for over a century. Located between the Upper West Side and

Harlem, this storied building is home to Columbia University faculty and staff, placing it at the heart of academic life. The area's rich history makes 410 Riverside Drive a notable landmark in New York City.

ARCHITECT: **CANY**  
YEAR BUILT: **1909**



SCOPE OF WORK:

**Facade Restoration:**

Facade repairs, Corner stabilization, Brick replacement, Masonry repointing, Installation of new stucco, Face brick stabilization.

**Architectural Stone:**

Terra cotta repairs faux balcony reconstruction.

**Concrete & Coating:**

Cast stone balcony cleaning.

**Roofing and Waterproofing:**

Mansard roof repairs, Installation of new liquid membrane, Skylight replacement, Curb repairs, Replacement of existing coping stones on main roof chimney, Installation of new metal flashing.

505 LAGUARDIA PLACE, NEW YORK

## 505 LAGUARDIA PLACE

505 LaGuardia Place is part of a trio of identical towers, each soaring to an impressive 30 stories. These towers collectively constitute University Village, spanning 5 acres in Greenwich Village. Standing prominently among them is the west-facing 505 LaGuardia, a restoration project we contributed to. Inspired by the Brutalist architectural style, these structures took shape between 1964 and 1967. Under the ownership of New York University (NYU), 505 LaGuardia has

been designated as a middle-income cooperative, offering housing opportunities while the other towers serve as residences for NYU faculty and families.

Today, these towers are celebrated for their iconic 20th-century modern architectural design.

ARCHITECT: **ACCARDO ENGINEERING**  
YEAR BUILT: **1967**



SCOPE OF WORK:

**Facade Restoration:**

Concrete facade renovation.

**Architectural Metal:**

Replacement of reinforcing bars, Structural rebar reinforcement repairs.

**Concrete & Coating:**

Sounding of concrete, Concrete repairs, Concrete Patching repairs, Sealant replacement.

564 PARK AVENUE, NEW YORK

# COLONY CLUB

Founded in 1903, The Colony Club was a groundbreaking women's-only social club, inspired by the exclusive men's clubs of the time. In 1916, it moved to 564 Park Avenue, retaining many features

from its original location. Despite its significance, it wasn't until 1981 that it was designated a NYC Landmark. Today, 564 Park Avenue is celebrated for its enduring modern architectural design.

ARCHITECT: **HOWARD L. ZIMMERMAN ARCHITECTS & ENGINEERS, DPC**  
YEAR BUILT: **1909**



## SCOPE OF WORK:

### Façade Restoration:

Extension of existing parapet wall, Removal and replacement of white brick facade.

### Architectural Stone:

Replacement of existing bluestone windowsills, Removal and replacement of existing water table stones, Removal and resetting of marble coping stones, Terra cotta flue removal.

### Architectural Metal:

Restoration and reinstallation of iron fence, Reinforcement of deteriorated structural steel members, Removal and replacement of existing loose laid steel lintels, Installation of specified flashing and trim at window heads, sills, and copings, Repair of structural steel column, Spandrel steel beam replacement, Installation of aluminum window flashing, Installation of steel guardrails on select parapets, Window grille restoration and reinstallation.

### Concrete and Coating:

Installation of cast stone windowsills.

66 MORTON STREET, NEW YORK

# 66 MORTON STREET

The Trustees of the Trinity Church constructed what is now known as 66 Morton Street. This Italian-style townhouse has captured significant attention due to its long list of celebrity owners, famous neighbors, and appearances in numerous Hollywood movies. Despite several renovations and restoration

efforts over the years, many original features still grace the home. Notably, the residence boasts nine fireplaces, adding to its unique character. Today, 66 Morton Street stands as a testament to both its rich history and the revitalization efforts that have restored its beauty.

ARCHITECT: **PETER PENNOYER ARCHITECTS**  
YEAR BUILT: **1901**



## SCOPE OF WORK:

### Façade Restoration:

Facade Cleaning, Partial facade brick replacement, Cornice replacement, Stucco Installation, Stucco at bulkhead extension.

### Architectural Stone:

Select Brownstone replacement with precast, Bluestone installation on parapets.

### Concrete & Coating:

Complete reconstruction of main stairs with concrete and stucco.

### Roofing and Waterproofing:

Bluestone paver installation on roof and balconies, Installation of liquid waterproofing membrane, Installation of lead coated roof.

940 PARK AVENUE, NEW YORK

# 940 PARK AVENUE

Constructed in 1925, 940 Park Avenue combines the distinct Art Deco style of its era with subtle touches of Mesoamerican motifs. Today, serving as a co-op building, it retains its original architectural allure.

Noteworthy for its ornamental details, the façade boasts warm orange cast stone, a defining feature that adds to its unique character and charm.

ARCHITECT: **BERTOLINI ARCHITECTURAL WORKS, D.P.C.**  
YEAR BUILT: **1925**



660 PARK AVENUE, NEW YORK

# 660 PARK AVENUE

660 Park Avenue, located in the Upper East Side, was built in 1926. This pre-war co-op houses only 12 apartments, making it an exclusive location. The

Italian Renaissance style of the building is perhaps its most striking feature. Its proximity to Central Park has also added to its appeal.

ARCHITECT: **JOSEPH K. BLUM CO. LLP**  
YEAR BUILT: **1926**



## SCOPE OF WORK:

**Façade Restoration:**  
Masonry restoration and replacement.

**Architectural Stone:**  
Granite repair and replacement, Terra cotta repair and replacement, Granite repair.

**Roofing and Waterproofing:**  
Balcony and terrace waterproofing.

## SCOPE OF WORK:

**Façade Restoration:**  
Facade cleaning, Masonry restoration.

**Architectural Stones:**  
Limestone Dutchman installation, Limestone patching, Selective limestone replacement.

**Architectural Metal:**  
Canopy, entrance, and gate restoration.

**Roofing and Waterproofing:**  
Roof replacement.

924 WEST END AVENUE, NEW YORK

# THE CLEBOURNE

The Clebourne, situated at 924 West End Avenue, stands as a testament to history. Built in 1913 on the former estate of Isidor and Ida Straus, tragic victims of the Titanic in 1912, it was transformed into an apartment building. Isidor, a co-owner of Macy's,

and Ida are honored by Straus Park nearby. In 1974, the building became a co-op, maintaining its unique trapezoidal shape and historical significance as a local landmark.

ARCHITECT: **CAPOBIANCO ENGINEERING GROUP, LLP**  
 YEAR BUILT: **1913**



48-50 WEST 69<sup>TH</sup> STREET, NEW YORK

# 48-50 WEST 69<sup>TH</sup> STREET

Originally two separate structures, 48 West 69th Street and 50 West 69th Street have undergone extensive construction to merge into a single,

unified townhouse. Over a century old, this building features detailed architecture that exemplifies the grand design and elegance of its era.

ARCHITECT: **FRADKIN & MCALPIN ARCHITECTS**  
 YEAR BUILT: **1910**



SCOPE OF WORK:

**Façade Restoration:**  
 Masonry parapet and corner reconstruction.

**Architectural Stone:**  
 Stone pointing.

**Architectural Metal:**  
 Steel column reinforcement.

SCOPE OF WORK:

**Façade Restoration:**  
 Installation of all new face brick, Front facade masonry repairs, Masonry repointing.

**Architectural Stone:**  
 Windowsill installation, Stone ledge replacement, Supply and installation of new cast stone window and door sills, Installation of new cast stone window and door sill, Installation of new coping stones, Installation of new coping stones at parapets, Supply and installation of GFRC panels.

**Architectural Metal:**  
 Fabrication and installation of railings, Installation of new stainless-steel gutter.

**Roofing and Waterproofing:**  
 Installation of waterproofing membrane, Furnish and installation of steel gutters, Installation of bitumen roofing system, Installation of copper and stainless-steel flashings.

131 EAST 10<sup>TH</sup> STREE, NEW YORK

# SAINT MARKS CHURCH IN THE BOWERY

St. Marks Church in the Bowery holds a rich history that stretches over two centuries. Built in 1795, it stands as one of the oldest church buildings in Manhattan. Over the years, the church has undergone various additions and improvements, including the construction of a steeple, the addition of a parish hall, renovations to the sanctuary, replacement of pillars, installation of an iron fence, and the inclusion of an altarpiece, with the structure being completed in 1854. In 1978, the

church experienced damage due to a fire that broke out in the area. Restoration efforts to mitigate the damage caused continued until 1983.

Recognizing its cultural and architectural importance, St. Mark's Church in the Bowery was designated as a New York City Landmark in 1966 and has been listed on The National Register of Historic Places.

ARCHITECT: **WALTER B. MELVIN ARCHITECTS, LLC**  
YEAR BUILT: **1795**



16 GRAMERCY PARK SOUTH, NEW YORK

# THE PLAYERS CLUB

Established in 1888 by Shakespearean actor Edwin Booth, The Players Club serves as a private social hub for artists and enthusiasts. It holds the distinction of being New York's oldest club still in its original location and was designated a National Historic Landmark in 1963, reflecting significant

American history. Initially exclusive to men, it admitted its first women members in 1989, marking a notable shift in tradition. Situated within a grand mansion built in 1847, its historical significance is further enhanced by its impressive location.

ARCHITECT: **THOMAS A. FENNIMAN, ARCHITECT**  
YEAR BUILT: **1847**  
AWARDS: **• AIA, NYS DESIGN AWARDS (2015)**  
**• 25TH LUCY G. MOSES PRESERVATION AWARDS (2015)**



SCOPE OF WORK:

**Façade Restoration:**  
Facade cleaning.

**Architectural Stone:**  
Terra cotta repair and replacement.

**Architectural Metal:**  
Railing fabrication and installation, Cast iron repair and replacement, Railing replacement, Entrance and gate restoration and window restoration.

15 WEST 67<sup>TH</sup> STREET, NEW YORK

# 15 WEST 67<sup>TH</sup> STREET

Once known as Central Park Studios Co-Op, 15 West 67th Street stands as a timeless piece of New York City's history, built over a century ago in 1905. The co-op Situated within the esteemed NY Artists' Colony Historic District, this building contains murals created by various artists and has served as the residence for numerous renowned American

artists and writers throughout its storied past. The external façade is a testament to its rich heritage, featuring an impressive Gothic two-story vestibule at the entrance. Inside, the lobby is adorned with intricate Gothic ornaments, contributing to the city's vibrant architectural landscape.

ARCHITECT: **WALTER B. MELVIN ARCHITECTS, LLC**  
YEAR BUILT: **1905**



## SCOPE OF WORK:

### Façade Restoration:

Areaway stucco replacement, Areaway wall repairs, Masonry repairs, & Stucco panel repairs.

### Architectural Stone:

Limestone crack repairs.

### Architectural Metal:

Railing fabrication and installation.

LOCUST VALLEY, NEW YORK

# PRATT FAMILY MAUSOLEUM

Located in Locust Valley, New York, stands the Pratt Family Mausoleum, a testament to architectural grandeur and familial legacy. Designed in the 1890s by the architect William Tubby, this mausoleum exudes Romanesque charm and elegance. What sets it apart is not only its striking design but also the exceptional quality of materials utilized in its construction.

ARCHITECT: **WALTER B. MELVIN ARCHITECTS, LLC**  
YEAR BUILT: **CA. 1890**



Built from exquisite pink granite stones and adorned with ornate gates, the Pratt Family Mausoleum commands attention and reverence. Within its grounds rest Charles Pratt, alongside several family members, including children and grandchildren. Charles Pratt, renowned as a visionary American businessman, is particularly celebrated for founding the esteemed Pratt Institute, leaving an enduring mark on both industry and education.



## SCOPE OF WORK:

### Façade Restoration:

Façade and stone cleaning, Face brick replacement, Brick pointing.

### Architectural Stone:

Limestone, brownstone, and granite repair and replacement, Terra cotta parapet reconstruction with cast stone, Balcony balustrade reconstruction.

### Roofing and Waterproofing:

Terrace roofing system replacement.

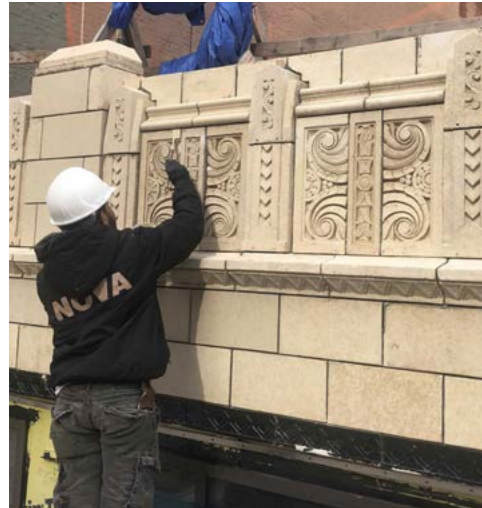
59 BLEECKER STREET, NEW YORK

# 59 BLEECKER STREET

In the heart of NoHo, Manhattan, at 59 Bleecker Street, stands a captivating piece of history. Originally a residential space, this address underwent a transformation in 1929, emerging as an Art Deco-style automobile service station, emblematic of its era's forward-thinking design.

Over time, the building saw structural changes, most notably in the 1960s. 59 Bleecker Street lies adjacent to the famed Bayard Condict Building, it is a testament to Manhattan's ever-changing landscape, where the past intertwines with the present.

ARCHITECT: **BEYER BLINDER BELLE**  
YEAR BUILT: **1929**



## SCOPE OF WORK:

### Architectural Stone:

Terra cotta replacement, Terra cotta installation, Terra cotta glazing, Architectural terra cotta work.

### Roofing and Waterproofing:

Roof replacement, Roof installation.

16 WEST 16<sup>TH</sup> STREET, NEW YORK

# 16 WEST 16<sup>TH</sup> STREET

Located in the vibrant Flatiron Union Square district, 16 West 16th Street, which is also known as 'The Chelsea Lane,' stands out with its distinctive design and impressive stature. This co-op, comprised of 14 stories and 489 apartment units, was built in 1964, showcasing exquisite Art Deco-

inspired architecture that remains an iconic symbol of its era. 16 West 16th Street stands as a timeless testament to mid-century design. The building epitomizes historical significance and timeless allure, meticulously maintained over the years to retain its enduring charm over the decades.

ARCHITECT: **THOMAS A. FENNIMAN, ARCHITECT**  
YEAR BUILT: **1964**



## SCOPE OF WORK:

### Façade Restoration:

Brick masonry crack repairs, Brick repointing, Brick spall repair, Brick replacement, Spalling brick replacement.

### Architectural Metal:

Railing repainting, reinstallation, and remounting.

### Roofing and Waterproofing:

Roofing membrane and flashing installation, Roofing overburden installation, Concrete roof deck patching, Fan curb replacement, Chimney flashing installation.

700 PARK AVENUE, NEW YORK

# 700 PARK AVENUE

700 Park Avenue, a luxury co-op in Manhattan's Upper East Side, was completed in 1961. The building's origins trace back to the site's previous occupant, the Union Theological Seminary. Over time, this location underwent a transformation,

evolving from an educational institution to prestigious residences. Its distinguished gray glazed brick façade and polished granite exterior stand as enduring symbols of its rich history and prime Manhattan location.

ARCHITECT: **WALTER B. MELVIN ARCHITECTS, LLC**  
YEAR BUILT: **1961**



108 LEONARD STREET, NEW YORK

# 108 LEONARD STREET

108 Leonard Street is a historically significant structure, listed on The National Register of Historic Places since 1982 and designated a New York City Landmark in 1987. Originally built in 1898 for The New York Life Insurance Company, its Beaux Arts

Style reflects remarkable craftsmanship and adds to the architectural diversity of New York City. Today, the building is home to numerous well-known celebrities and continues to attract public attention.

ARCHITECT: **HOWARD L. ZIMMERMAN ARCHITECTS & ENGINEERS, DPC**  
YEAR BUILT: **1898**



SCOPE OF WORK:

**Façade Restoration:**

100 Face brick reskinning, Backup wall replacement.

**Architectural Stone:**

Windowsill replacement, Coping stone replacement.

**Architectural Metal:**

Terrace railing repairs, Gate replacement, Railing painting, Railing handrail extension, Removal and replacement of existing mandrels.

**Roofing and Waterproofing:**

Roof membrane system replacement, Copper flashing replacement.

SCOPE OF WORK:

**Façade Restoration:**

Masonry restoration, Façade and stone cleaning.

**Architectural Stone:**

Terra cotta repair and replacement.

**Architectural Metal:**

Cast iron repair and replacement, Railing replacement.

**Roofing and Waterproofing:**

Balcony and terrace waterproofing.



# SAFETY

At Nova Construction Services, safety and compliance are at the forefront of everything we do. We prioritize the well-being of our workers by providing them with comprehensive training and state-of-the-art equipment, enabling them to execute their tasks safely and efficiently.

Regular safety inspections and audits are conducted to meticulously identify and address potential hazards, always ensuring a secure working environment. Our commitment to maintaining the highest standards of safety not only safeguards our team but also ensures the delivery of top-quality exterior restoration services to our valued customers.

Our stringent safety protocols encompass thorough hazard identification, job site analysis, and unwavering compliance with all relevant regulations and standards. By adhering to these rigorous measures and conducting regular safety inspections, we guarantee the utmost safety and security throughout every phase of our projects.

Partner with Nova Construction Services for unparalleled exterior restoration services backed by a steadfast dedication to safety and compliance. Your peace of mind is our priority.

# NOVA PROVEN MAP PROCESS

At NOVA Construction Services, our unwavering commitment to excellence is exemplified through the meticulous implementation of our proven MAP (Management Accountability Planning) process.

From the initial bid to project completion, our structured approach emphasizes accountability, effective management, and seamless coordination. Leveraging advanced construction management software like Procore, we enhance efficiency, ensuring that your project receives the utmost attention to detail and precision. Integral to our process is the recognition that good communication is paramount. We prioritize transparent and open lines of communication, keeping you informed at every stage.

This commitment, combined with our dedication to delivering top-notch construction services, ensures that we not only meet but exceed your expectations, providing an experience marked by precision, accountability, and exceptional outcomes.

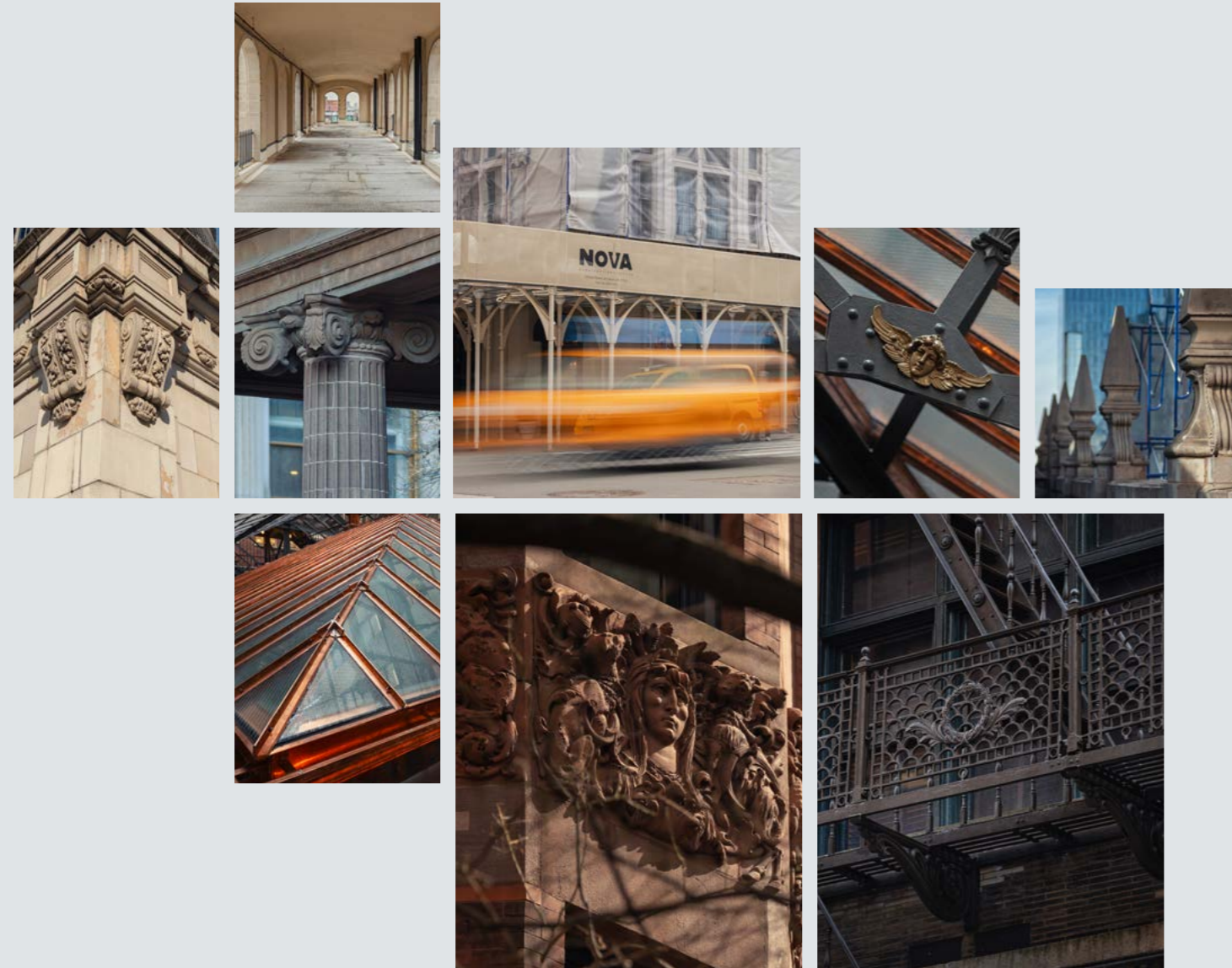
- 01 Project Bid and Award**
  - Assessment project alignment and client fit
  - Project Bid and Walkthrough
  - Preparation of Estimate and RFI
  - Interview and Award of Project

- 02 Pre-Construction**
  - Contract Preparation
  - Mobilization and Phase Plan Development
  - Project Set Up in Procore Management Software
  - Permits
  - Submittals, Mock-Ups, and Shop Drawings
  - Project Directory
  - Notification Letters to Tenants and Management

- 03 Construction**
  - Mobilization of Project
  - Procurement of Long Lead Items
  - Performance of Necessary Repairs
  - Ensuring Schedule Guarantee for a 2-Week Look Ahead
  - Accountability for the Construction Team: Ensuring Timely Completion without Delays

- 04 Close Out**
  - Compilation of Final Material Submittal List
  - Preparation of As-Built Drawings
  - Conducting Customer Surveys
  - Project Summary Report
  - Issuance of Close-Out Letter to Clients





Let's bring your restoration visions to life!

Contact Nova Construction Services today  
to elevate your exterior restoration projects!

**CONTACT US**

Email us at

[nova@novaconstructionservices.com](mailto:nova@novaconstructionservices.com)

or call:

**718-349-7770**

website:

[www.novaconstructionservices.com](http://www.novaconstructionservices.com)



**NOVA**  
CONSTRUCTION SERVICES